

|  |                        |                             |   |
|--|------------------------|-----------------------------|---|
| WAAS<br>CH <b>62834</b><br><b>W09A</b> | APP CRS<br><b>092°</b> | Rwy Idg<br>TDZE<br>Apt Elev | <b>5000</b><br><b>856</b><br><b>861</b> |
|--|------------------------|-----------------------------|---|

## RNAV (GPS) RWY 9

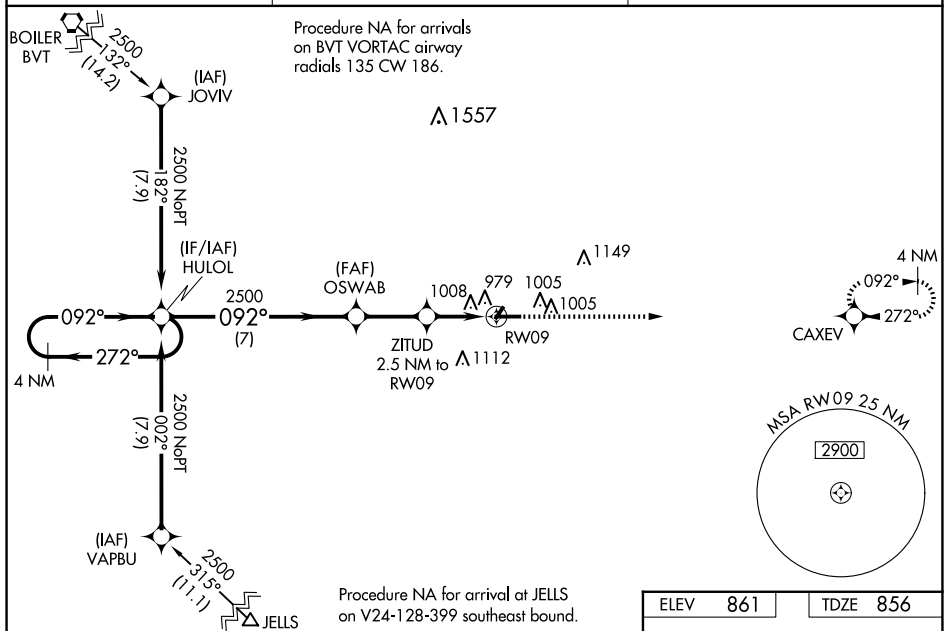
FRANKFORT CLINTON COUNTY RGNL (FKR)

**T**  
**A** NA

Baro-VNAV NA when using Indianapolis Exec altimeter setting. For uncompensated Baro-VNAV systems, LNAV/VNAV NA below -16°C (4°F) or above 54°C (130°F). DME/DME RNP-0.3 NA. VDP NA with Indianapolis Exec altimeter setting. When local altimeter setting not received, use Indianapolis Exec altimeter setting: increase LPV DA to 1162 feet and visibility  $\frac{1}{8}$  SM all Cats; increase LNAV/VNAV DA to 1245 feet and visibility  $\frac{1}{8}$  SM all Cats; increase all MDAs 60 feet and LNAV and Circling Cats C/D visibilities  $\frac{1}{4}$  SM.

**MISSED APPROACH:**  
Climb to 2500 direct  
CAXEV and hold.

|                          |  |                                 |
|--------------------------|--|---------------------------------|
| AWOS-3<br><b>124.325</b> | GRISCOM APP CON ★<br><b>123.85 291.675</b> | UNICOM<br><b>123.0 (CTAF) 0</b> |
|--------------------------|--|---------------------------------|



EC-2, 10 JUL 2025 to 07 AUG 2025

