

APP CRS	Rwy Idg	4000
354°	TDZE	248
	Apt Elev	248

RNAV (GPS) RWY 35
PANOLA COUNTY-SHARPE FLD (4F2)

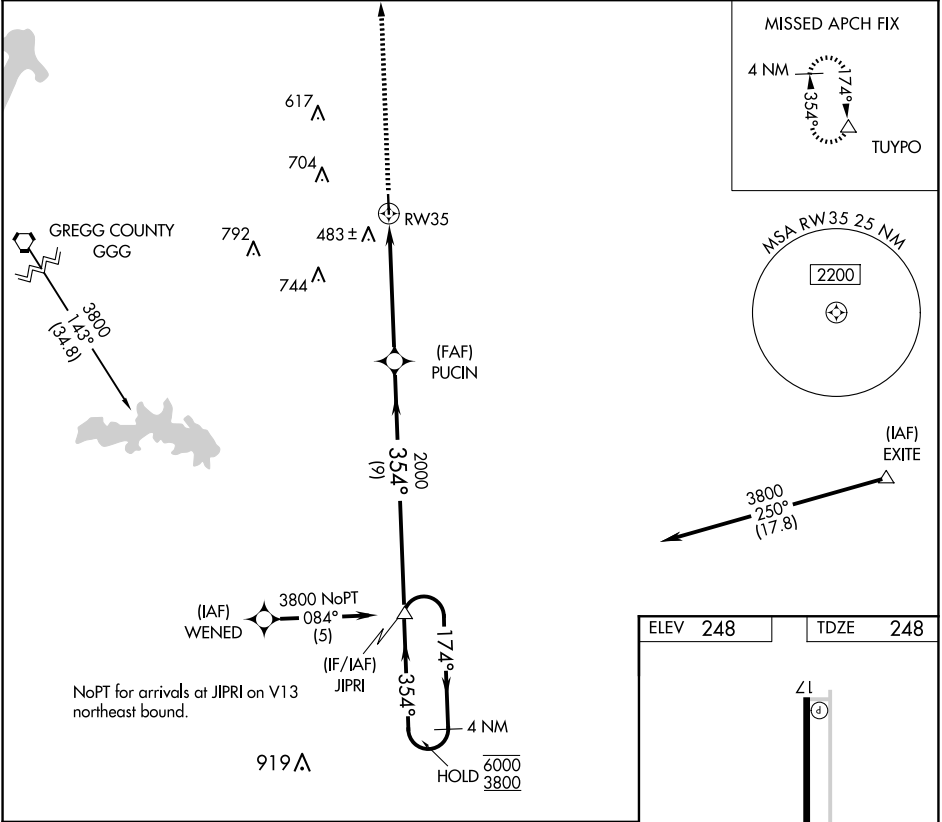
RNP APCH-GPS.

⚠

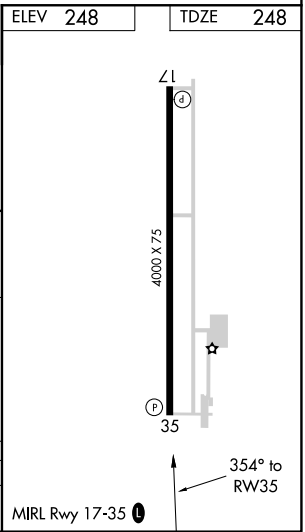
Rwy 35 helicopter visibility reduction below ¾ SM NA.
When local altimeter setting not received, use Longview altimeter setting.

MISSED APPROACH: Climb to 2000 direct TUYPO and hold.

AWOS-3PT 121.125	SHREVEPORT APP CON ★ 119.9 335.55	UNICOM 122.8 (CTAF) 0
---------------------	--------------------------------------	--------------------------



Visual Segment - Obstacles.				
4 NM Holding Pattern				
JIPRI				
PUCIN				
RW35				
2000				
9 NM				
5.3 NM				
CATEGORY	A	B	C	D
LNAV MDA	840-1	592 (600-1)	840-1½ 592 (600-1½)	NA



SC-2, 10 JUL 2025 to 07 AUG 2025

SC-2, 10 JUL 2025 to 07 AUG 2025