

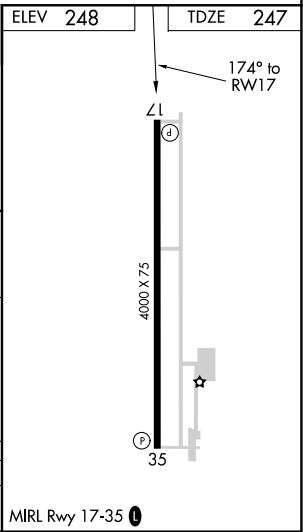
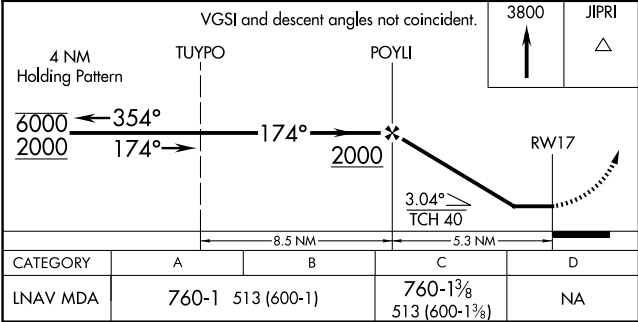
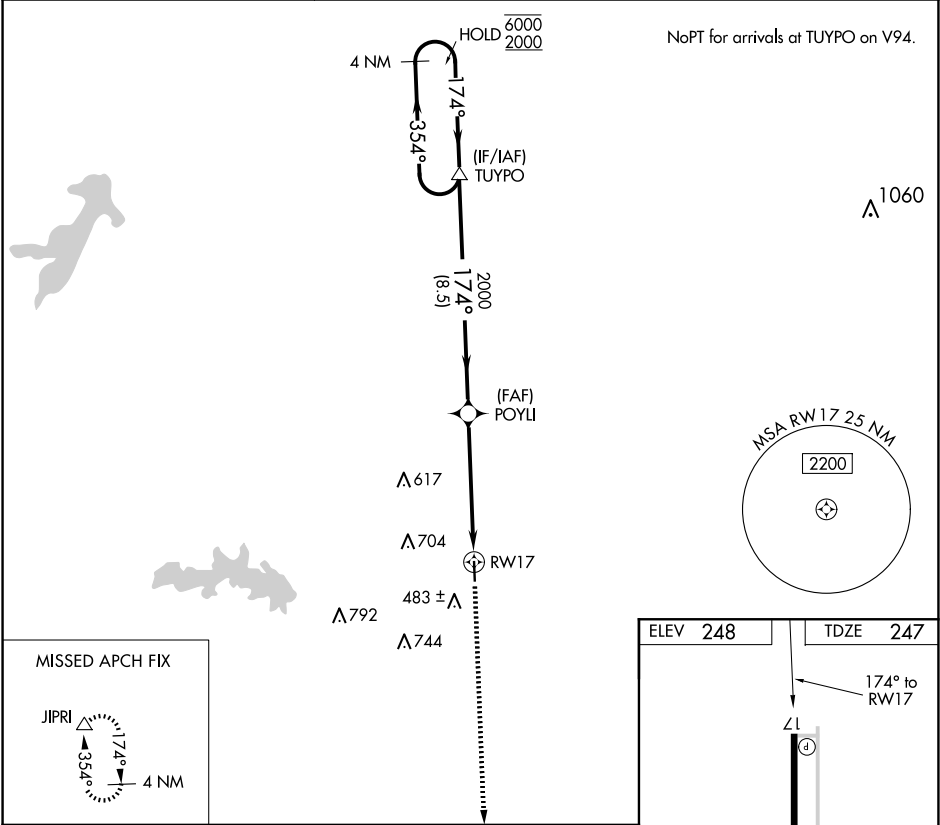
APP CRS	Rwy Idg	4000
174°	TDZE	247
	Apt Elev	248

RNAV (GPS) RWY 17

PANOLA COUNTY-SHARPE FLD (4F2)

RNP APCH-GPS. ▲ Procedure NA at night. Rwy 17 helicopter visibility reduction below 1 SM NA. When local altimeter setting not received, use Longview altimeter setting.	MISSED APPROACH: Climb to 3800 direct JIPRI and hold, continue climb-in-hold to 3800.
--	---

AWOS-3PT 121.125	SHREVEPORT APP CON ★ 119.9 335.55	UNICOM 122.8 (CTAF) 0
---------------------	--------------------------------------	--------------------------



SC-2, 10 JUL 2025 to 07 AUG 2025

SC-2, 10 JUL 2025 to 07 AUG 2025