

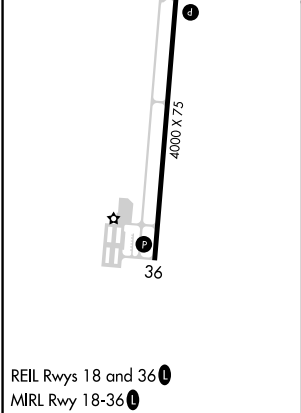
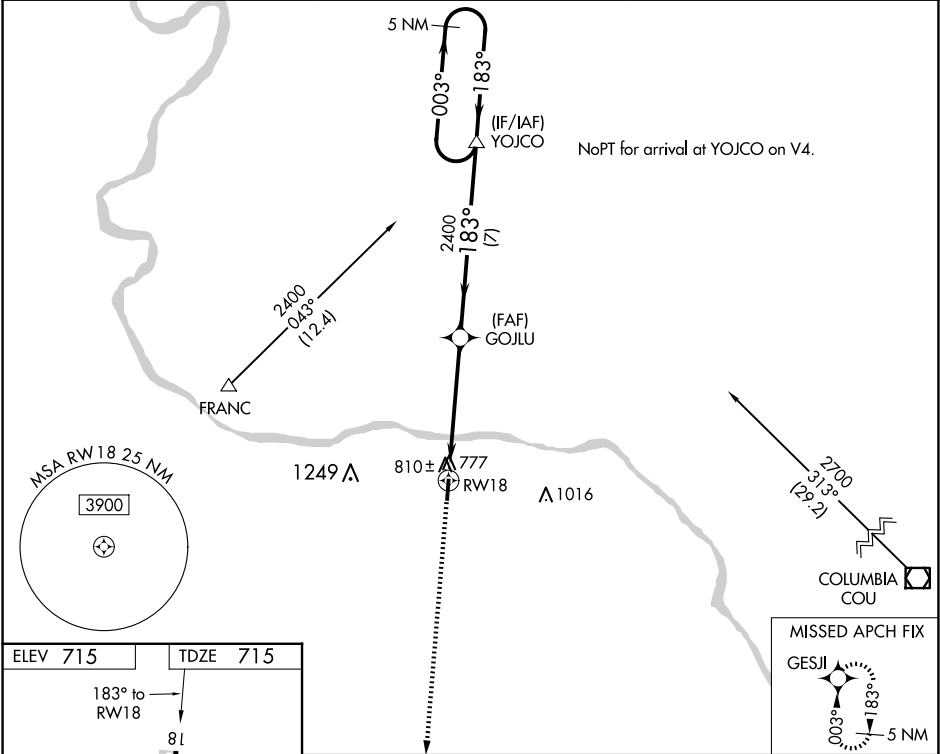





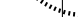

WAAS CH 72703 W18A	APP CRS 183°	Rwy Idg TDZE 715 Apt Elev 715	4000
--	------------------------	---	-------------

RNAV (GPS) RWY 18

JESSE VIERTEL MEML (V.E.R.)

RNP APCH.		MISSED APPROACH: Climb to 2400 direct GESJ1 and hold.
 NA	Circling Rwy 36 NA at night. Rwy 18 helicopter visibility reduction below 3/4 SM NA. Use Columbia Rgnl altimeter setting.	
AWOS-3PT 119.625	MIZZU APP CON 124.375	UNICOM 122.7 (CTAF) 



2400 ↑		GESJ1 		GOJLU 		YOJCO 		5 NM Holding Pattern	
		RW18 		183° 2400		183° 2400		003° 2400	
5.1 NM		7 NM		GP 3.00° TCH 40					
CATEGORY		A		B		C		D	
LPV DA		1103-1½		388 (400-1½)				NA	
LNAV MDA		1140-1		425 (500-1)		1140-1¼ 425 (500-1¼)		NA	
CIRCLING		1260-1 545 (600-1)		1340-1 625 (700-1)		1420-2 705 (800-2)		NA	

NC-3, 10 JUL 2025 to 07 AUG 2025

NC-3, 10 JUL 2025 to 07 AUG 2025