

WAAS CH <b>53447</b> <b>W35A</b>	APP CRS <b>349°</b>	Rwy Idg <b>4200</b> TDZE <b>1047</b> Apt Elev <b>1047</b>
--	------------------------	---

RNAV (GPS) RWY 35

DECATUR MUNI (LUD)

RNP APCH - GPS.

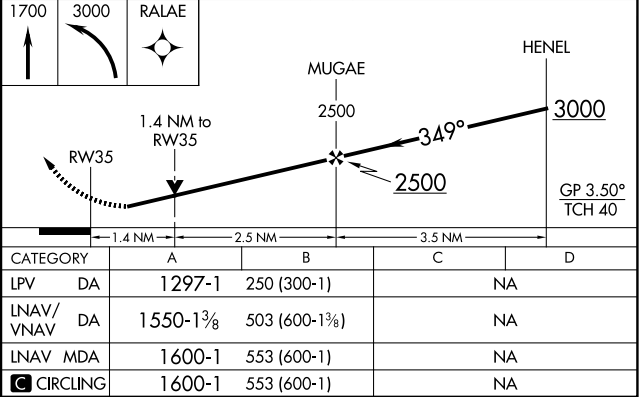
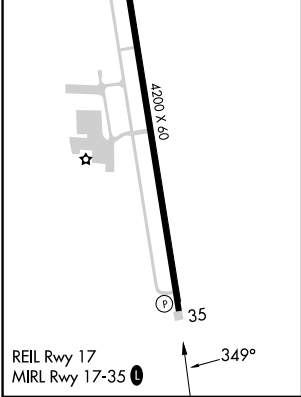
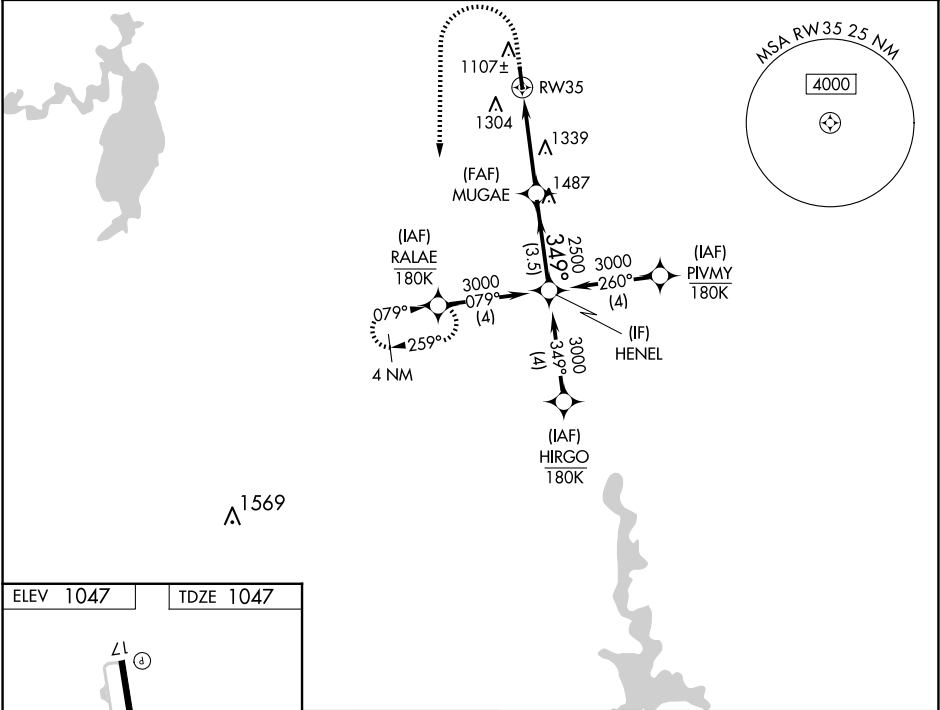
▼

▲

Rwy 35 helicopter: visibility reduction below ¾ SM NA. Baro-VNAV and VDP NA when using FTW altimeter setting. For uncompensated Baro-VNAV systems, LNAV/VNAV NA below -17°C or above 54°C. When local altimeter setting not received, use FTW altimeter setting and increase LPV DA to 1408 feet; increase LNAV/VNAV DA to 1661 feet and all visibilities ¾ SM; increase all MDAs 120 feet.

MISSED APPROACH:  
Climb to 1700 then climbing left turn to 3000 direct RALAE and hold.

AWOS-3 <b>118.225</b>	LONE STAR APP CON <b>118.1 306.95</b>	UNICOM <b>122.8(CTAF) 0</b>
--------------------------	--	--------------------------------



SC-2, 10 JUL 2025 to 07 AUG 2025

SC-2, 10 JUL 2025 to 07 AUG 2025