

WAAS CH <b>40107</b> <b>W17A</b>	APP CRS <b>169°</b>	Rwy Idg <b>4200</b> TDZE <b>1047</b> Apt Elev <b>1047</b>
--	------------------------	---

RNAV (GPS) RWY 17

DECATUR MUNI (LUD)

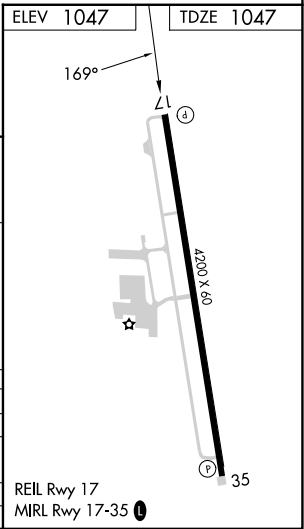
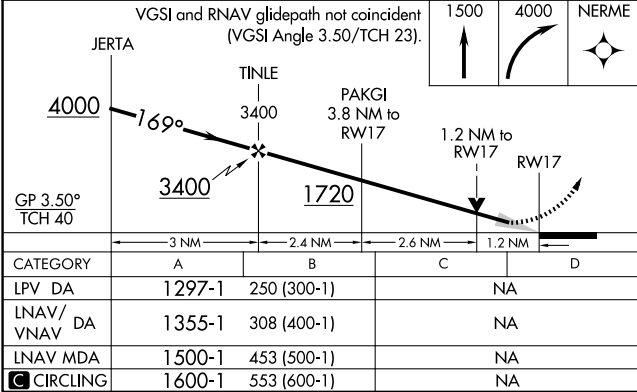
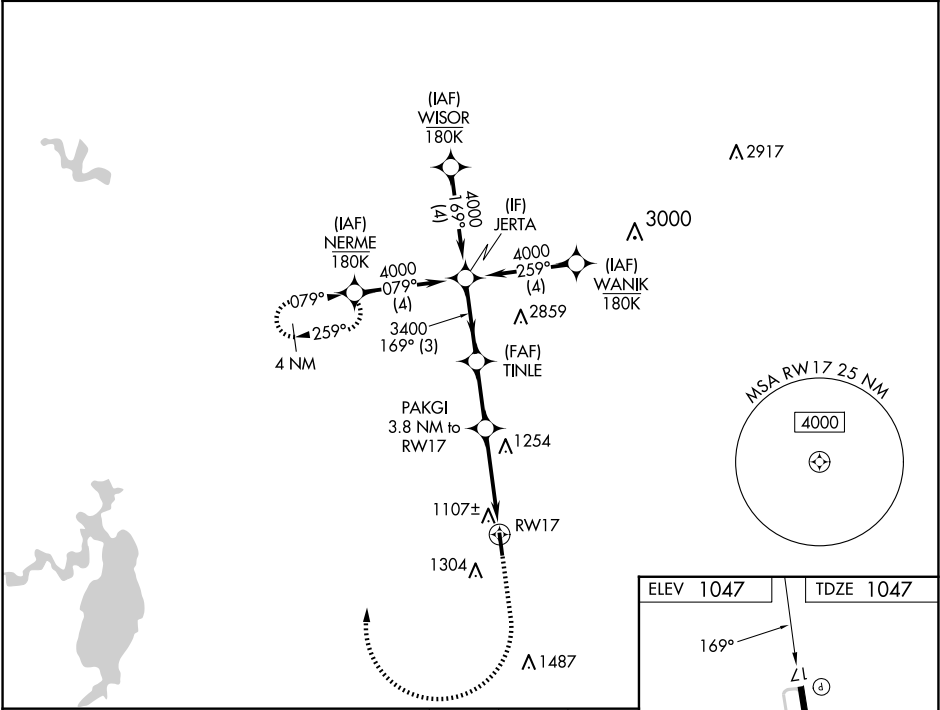
RNP APCH - GPS.

⚠

For uncompensated Baro-VNAV systems, LNAV/VNAV NA below -17°C or above 54°C. Baro-VNAV and VDP NA when using FTW altimeter setting. When local altimeter setting not received, use FTW altimeter setting and increase LPV DA to 1408 feet; increase LNAV/VNAV DA to 1466 feet and all visibilities ½ SM; increase all MDAs 120 feet.

MISSED APPROACH: Climb to 1500 then climbing right turn to 4000 direct NERME and hold, continue climb-in-hold.

AWOS-3 <b>118.225</b>	LONE STAR APP CON <b>118.1 306.95</b>	UNICOM <b>122.8(CTAF) 0</b>
--------------------------	--	--------------------------------



SC-2, 10 JUL 2025 to 07 AUG 2025

SC-2, 10 JUL 2025 to 07 AUG 2025