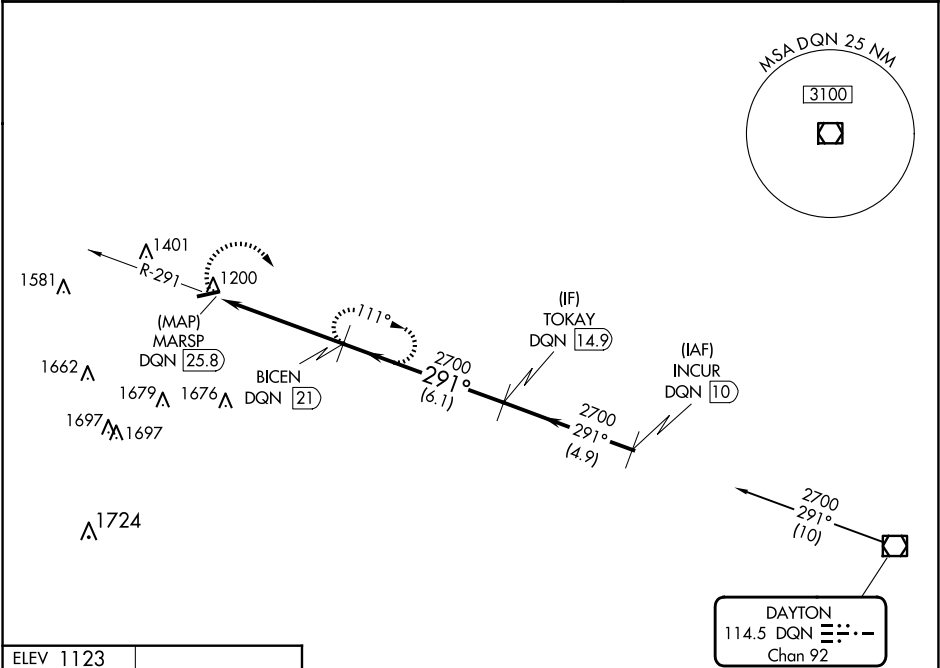


VOR/DME DQN	APP CRS	Rwy Idg	N/A
114.5	291°	TDZE	N/A
Chan 92		Apt Elev	1123

VOR-A
RANDOLPH COUNTY (I22)

DME required.	MISSED APPROACH: Climbing right turn to 2700 on DQN VOR/DME R-291 to BICEN/21 DME and hold.
NA	

VES AWOS-3PT 125.9	COLUMBUS APP CON 134.45 352.05	UNICOM 123.0 (CTAF) 0
-----------------------	-----------------------------------	--------------------------



Procedure NA for arrival on DQN VOR/DME
airway radials 234 CW 329.

<div>2700 DQN R-291</div>		<div>BICEN DQN 21</div>		<div>BICEN DQN 21</div>		<div>TOKAY DQN 14.9</div>	
<div>MARS P DQN 25.8</div>		<div>2700</div>		<div>2700</div>		<div>2700</div>	
4.8 NM		6.1 NM					
CATEGORY	A		B		C		D
CIRCLING	1700-1		577 (600-1)		1820-2 697 (700-2)		NA

EC-2, 10 JUL 2025 to 07 AUG 2025

EC-2, 10 JUL 2025 to 07 AUG 2025