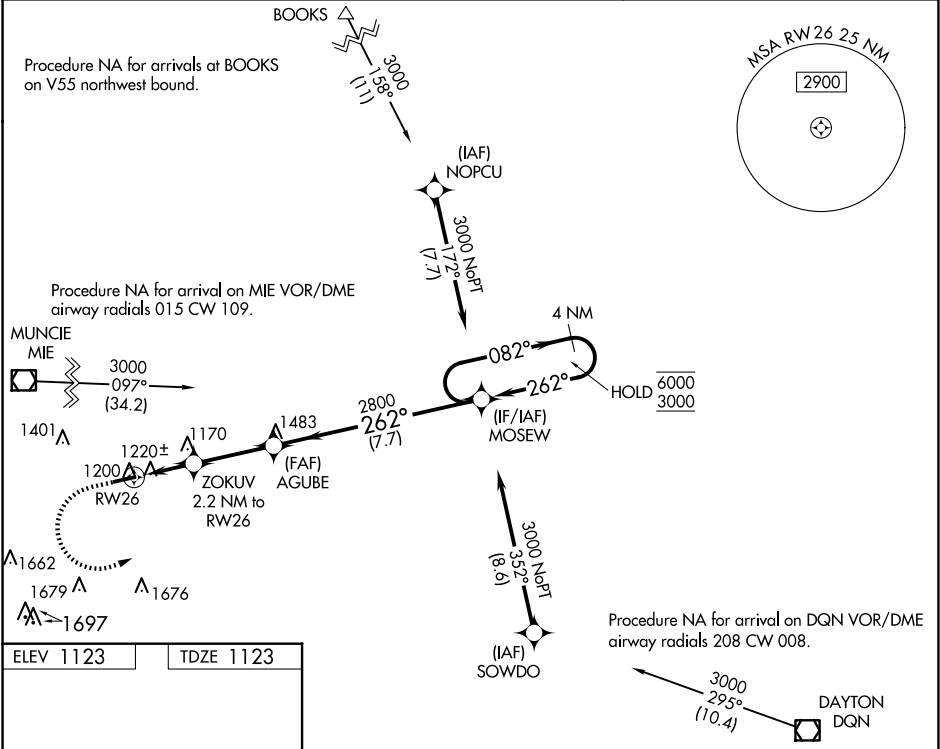


WAAS CH 78120 W26A	APP CRS 262°	Rwy Idg TDZE Apt Elev	4300 1123 1123
--	------------------------	-----------------------------	---

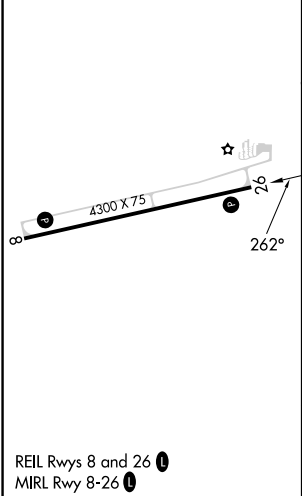
RNAV (GPS) RWY 26
RANDOLPH COUNTY (I22)

RNP APCH - GPS.	MISSED APPROACH: Climb to 2500 then climbing left turn to 3000 direct MOSEW and hold.
Baro-VNAV NA. Use Versailles altimeter setting; when not received, use Muncie altimeter setting; increase all DA/MDA 20 feet and visibility LPV all Cats ½ SM.	

VES AWOS-3PT 125.9	COLUMBUS APP CON 134.45 352.05	UNICOM 123.0 (CTAF) 1
------------------------------	--	---------------------------------



ELEV 1123	TDZE 1123
-----------	-----------



2500	3000	MOSEW	VGSI and RNAV glidepath not coincident (VGSI Angle 3.00/TCH 25).	4 NM Holding Pattern
AGUBE	ZOKUV 2.2 NM to RW26	2800	1860	2800
2.2 NM	2.9 NM	7.7 NM		
CATEGORY	A	B	C	D
LPV DA	1495-1	372 (400-1)		NA
RNAV/VNAV DA	1449-1	326 (400-1)		NA
RNAV MDA	1540-1	417 (500-1)	1540-1 3/8 417 (500-1 3/8)	NA
CIRCLING	1620-1	497 (500-1)	1820-2 697 (700-2)	NA

EC-2, 10 JUL 2025 to 07 AUG 2025

EC-2, 10 JUL 2025 to 07 AUG 2025