

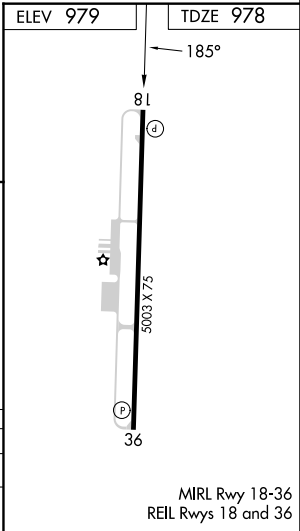
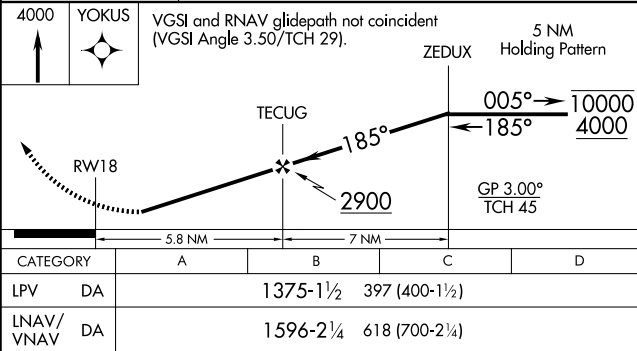
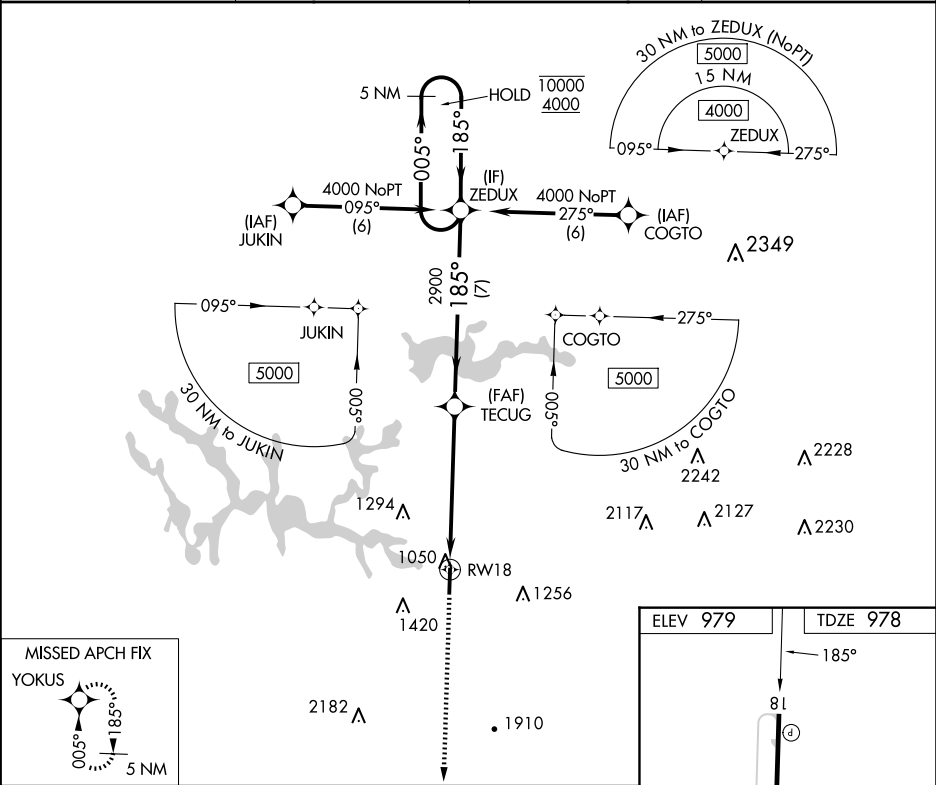
WAAS CH 42708 W18A	APP CRS 185°	Rwy Idg TDZE Apt Elev	5003 978 979
--	------------------------	-----------------------------	---

RNAV (GPS) Z RWY 18

WINCHESTER MUNI (BGF)

RNP APCH.	MISSED APPROACH: Climb to 4000 direct YOKUS and hold.
Rwy 18 helicopter visibility reduction below ¾ SM NA. For uncompensated Baro-VNAV systems, LNAV/VNAV NA below -16°C or above 54°C.	

AWOS-3 121.675	MEMPHIS CENTER 128.15 323.125	GCO 121.725	UNICOM 122.8 (CTAF)
--------------------------	---	-----------------------	-------------------------------



SE-1, 10 JUL 2025 to 07 AUG 2025

SE-1, 10 JUL 2025 to 07 AUG 2025