

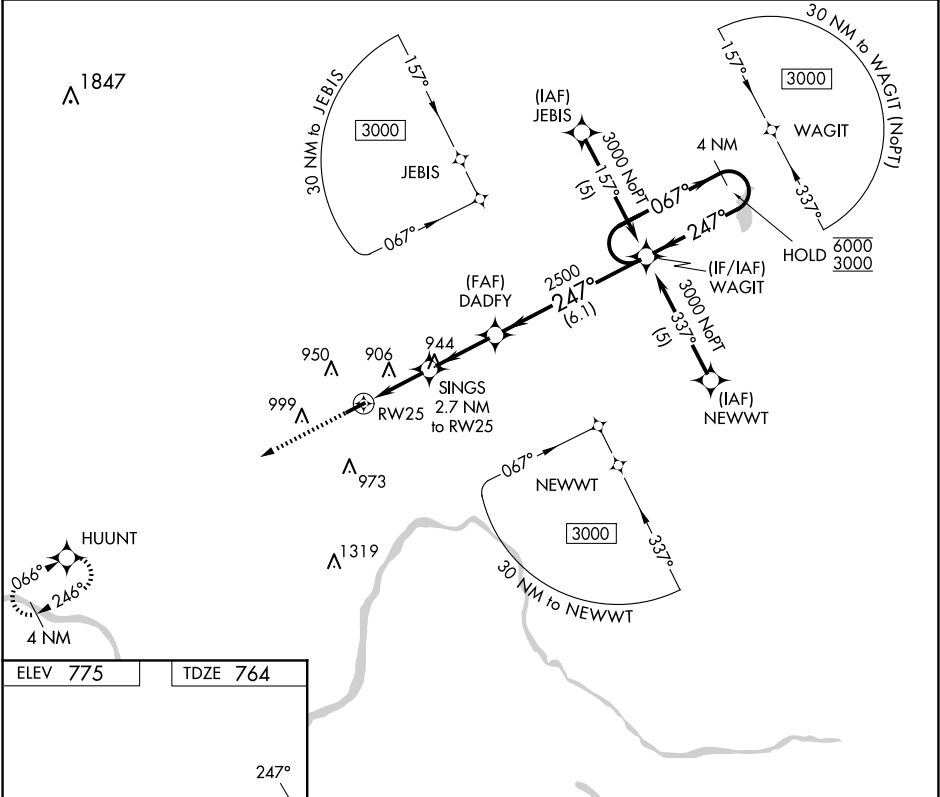
APP CRS	Rwy Idg	4033
247°	TDZE	764
	Apt Elev	775

RNAV (GPS) RWY 25

PAUL C MILLER/SPARTA (8D4)

RNP APCH.	<div><div>▼</div><div>NA</div><div>Rwy 25 helicopter visibility reduction below ¾ SM NA. When local altimeter setting not received, use Grand Rapids altimeter setting. VDP NA when using Grand Rapids altimeter setting.</div></div>	MISSED APPROACH: Climb to 3000 direct HUUNT and hold.
-----------	---	--

AWOS-3PT 126.65	GREAT LAKES APP CON ★ 124.6 257.6	UNICOM 122.8 (CTAF) 0
--------------------	--------------------------------------	--------------------------



ELEV 775	TDZE 764	Visual Segment - Obstacles.			
		HUUNT			4 NM Holding Pattern
		SINGS 2.7 NM to RW25			DADFY
		RW25			WAGIT
		1.2 NM to RW25			1.2 NM
		1.5 NM			2.6 NM
		6.1 NM			
CATEGORY	A	B	C	D	
LNAV MDA	1240-1	476 (500-1)	NA		
CIRCLING	1300-1 525 (600-1)	1340-1 565 (600-1)	NA		

EC-1, 10 JUL 2025 to 07 AUG 2025

EC-1, 10 JUL 2025 to 07 AUG 2025