

WAAS CH <b>82327</b> <b>W36A</b>	APP CRS <b>002°</b>	Rwy Idg <b>4000</b> TDZE <b>681</b> Apt Elev <b>698</b>
--	------------------------	---

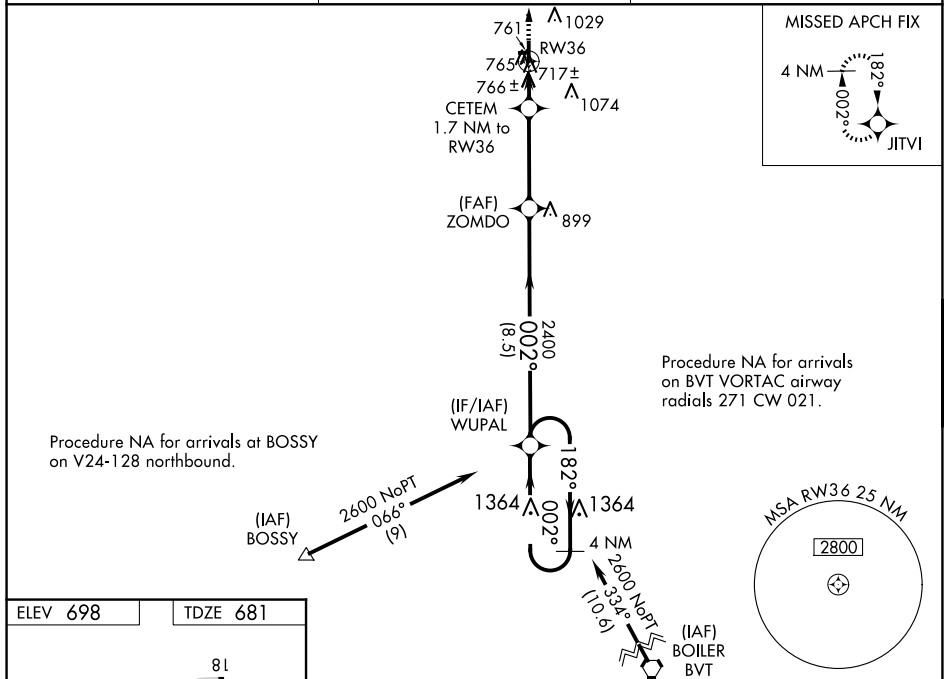
RNAV (GPS) RWY 36  
JASPER COUNTY (RZL)

RNP APCH.

**T** Baro-VNAV NA when using Knox altimeter setting. For uncompensated Baro-VNAV systems, LNAV/VNAV NA below -22°C or above 54°C. When local altimeter setting not received use Knox altimeter setting and increase all DA 78 feet and all MDA 80 feet, increase LPV and LNAV/VNAV all Cats visibility  $\frac{1}{8}$  mile and LNAV and Circling Cat C visibility  $\frac{1}{4}$  mile. Rwy 36 helicopter visibility reduction below 1 SM NA. Circling NA to Rwy's 9 and 27.

**MISSED APPROACH:**  
Climb to 2600 direct  
JTV and hold.

AWOS-3P <b>119.175</b>	CHICAGO CENTER <b>132.5 284.7</b>	UNICOM <b>122.8 (CTAF) 0</b>
---------------------------	--------------------------------------	---------------------------------



The diagram illustrates the ZOMDO holding pattern, which is a racetrack pattern. Key features include:

- Altitude:** The pattern is established at 2600 feet.
- Navigation Aids:** WUPAL and JETVI are shown as navigation aids. CETEM is located 1.7 NM from RW36.
- Holding Pattern:** The pattern consists of two parallel legs separated by 8.5 NM. The inbound leg is 2400 feet long, and the outbound leg is 2600 feet long. The turn angle between legs is 182 degrees.
- GP 3.00° TCH 40:** This indicates a glide path of 3.00 degrees and a threshold crossing height of 40 feet.
- Distances:** The distance from RW36 to the start of the pattern is 1.7 NM. The total length of the pattern is 8.5 NM.

CATEGORY	A	B	C	D
LPV DA	931-1	250 (300-1)		NA
LNAV/VNAV DA	947-1	266 (300-1)		NA
LNAV MDA	1020-1	339 (400-1)		NA
CIRCLING	1120-1 422 (500-1)	1380-1 682 (700-1)	1440-2¼ 742 (800-2¼)	NA

EC-2, 10 JUL 2025 to 07 AUG 2025

EC-2, 10 JUL 2025 to 07 AUG 2025