

APP CRS
002°

Rwy Idg
TDZE
Apt Elev

5001
673
679

RNAV (GPS) RWY 36

WHITE COUNTY (MCX)

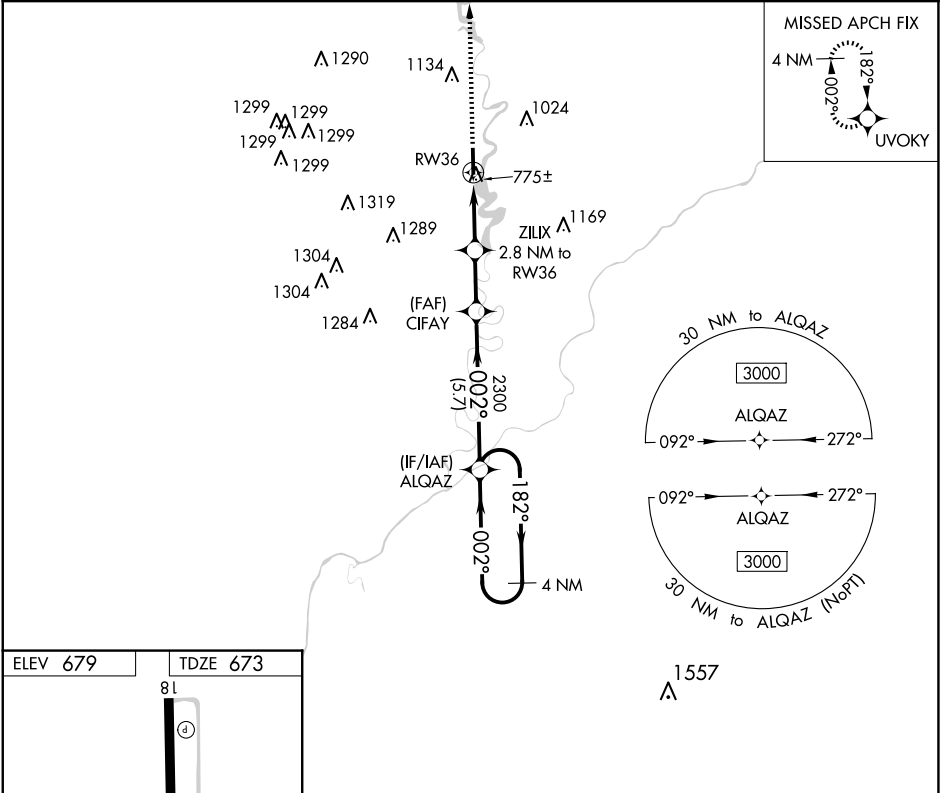
▽

▲

DME/DME RNP-0.3 NA. Straight-in Rwy 36 NA at night, Circling Rwy 36 NA at night. Rwy 36 helicopter visibility reduction below 1 SM NA.

MISSED APPROACH: Climb to 3000 direct UVOKY and hold.

AWOS-3P 124.05	GRISSEM APP CON ★ 123.85 291.675	UNICOM 122.8 (CTAF) 0
--------------------------	--	--



ELEV 679

TDZE 673

81

5001 X 75

36

002°

MIRL Rwy 18-36

REIL Rwy 18 and 36

3000

UVOKY

VGSI and descent angles not coincident (VGSI Angle 4.00/TCH 25).

4 NM Holding Pattern

ALQAZ

182°

002°

3000

ZILIX 2.8 NM to RW36

CIFAY

3.00° TCH 40

1600

2300

2.8 NM

2.2 NM

5.7 NM

CATEGORY	A	B	C	D
LNAV MDA	1040-1 367 (400-1)			
CIRCLING	1200-1 521 (600-1)	1340-1 661 (700-1)	1500-2½ 821 (900-2½)	1500-2¾ 821 (900-2¾)