

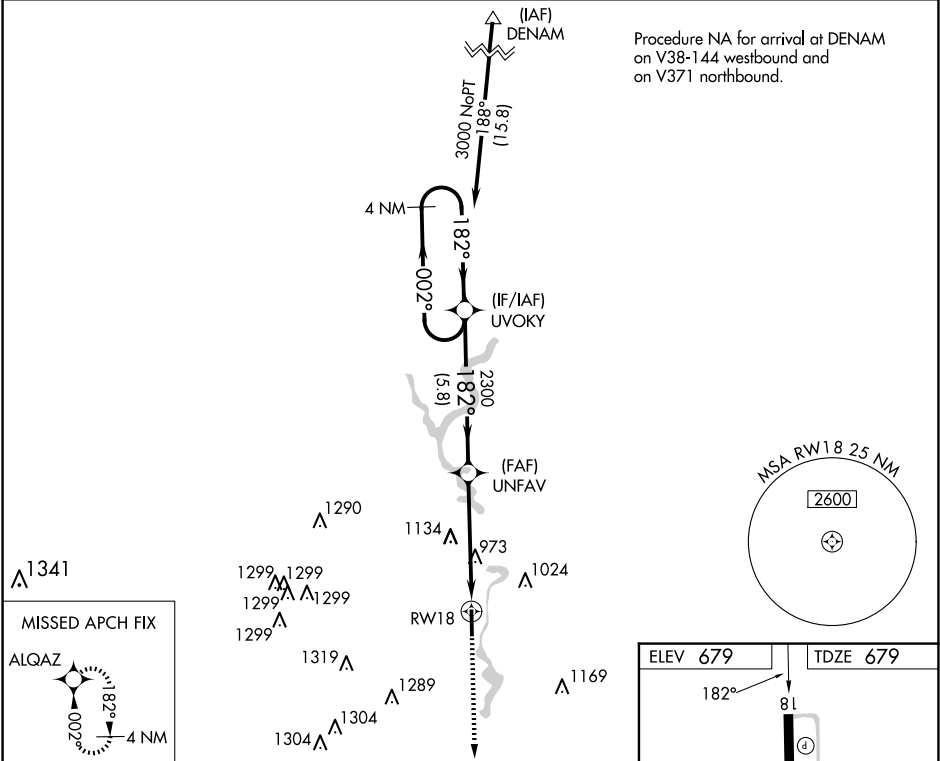


WAAS CH 70728 W18A	APP CRS 182°	Rwy Idg TDZE 679 Apt Elev 679	5001
--	------------------------	---	-------------

RNAV (GPS) RWY 18
WHITE COUNTY (MCX)

 Circling Rwy 36 NA at night. DME/DME RNP-0.3 NA.	MISSED APPROACH: Climb to 3000 direct ALQAZ and hold.
--	---

AWOS-3P 124.05	GRISOM APP CON ★ 123.85 291.675	UNICOM 122.8 (CTAF) 
--------------------------	---	---



4 NM Holding Pattern

3000

←002°

182°→

UVOKY

182°

UNFAV

2300

3.00°

TCH 40

1.8 NM to RW18

RW18

5.8 NM

3.2 NM

1.8 NM

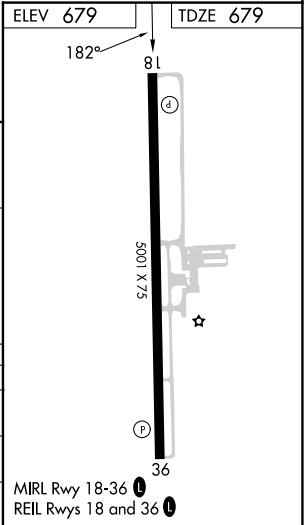
3000

↑

ALQAZ

✦

CATEGORY	A	B	C	D
LP MDA	1280-1	601 (700-1)	1280-1¾	601 (700-1¾)
LNAV MDA	1440-1 761 (800-1)	1440-1¼ 761 (800-1¼)	1440-2½	761 (800-2½)
CIRCLING	1440-1 761 (800-1)	1440-1¼ 761 (800-1¼)	1500-2½ 821 (900-2½)	1500-2¾ 821 (900-2¾)



EC-2, 10 JUL 2025 to 07 AUG 2025

EC-2, 10 JUL 2025 to 07 AUG 2025