

24305

RNAV (GPS) RWY 27

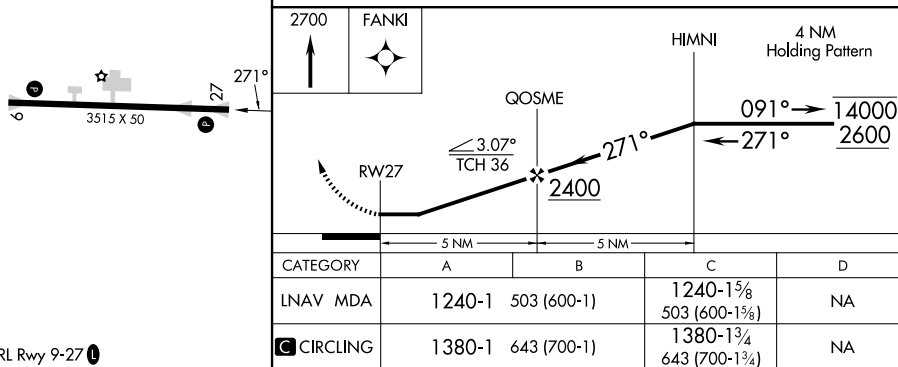
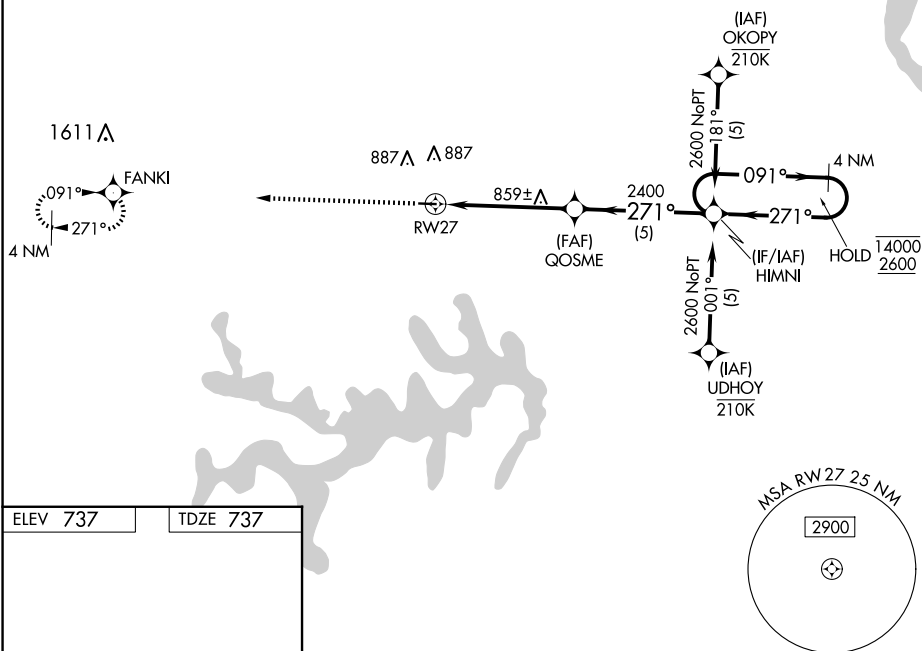
CPT BEN SMITH AIRFIELD/MONROE CITY (K52)

T Procedure NA at night. Rwy 27 helicopter visibility reduction
A NA below 1 SM NA. Use Quincy, IL altimeter setting.

MISSED APPROACH: Climb to 2700 direct FANKI and hold.

UIN ASOS
121.425

KANSAS CITY CENTER
126.225 317.775

UNICOM
122.8 (CTAF) **L**

MONROE CITY, MISSOURI
Orig-C 15JUN23

CPT BEN SMITH AIRFIELD/MONROE CITY (K52)

39°38'N-91°44'W

RNAV (GPS) RWY 27

NC-3, 10 JUL 2025 to 07 AUG 2025