

APP CRS	Rwy Idg	4239
054°	TDZE	821
	Apt Elev	833

RNAV (GPS) RWY 5

WATERTOWN MUNI (RYV)

RNP APCH.

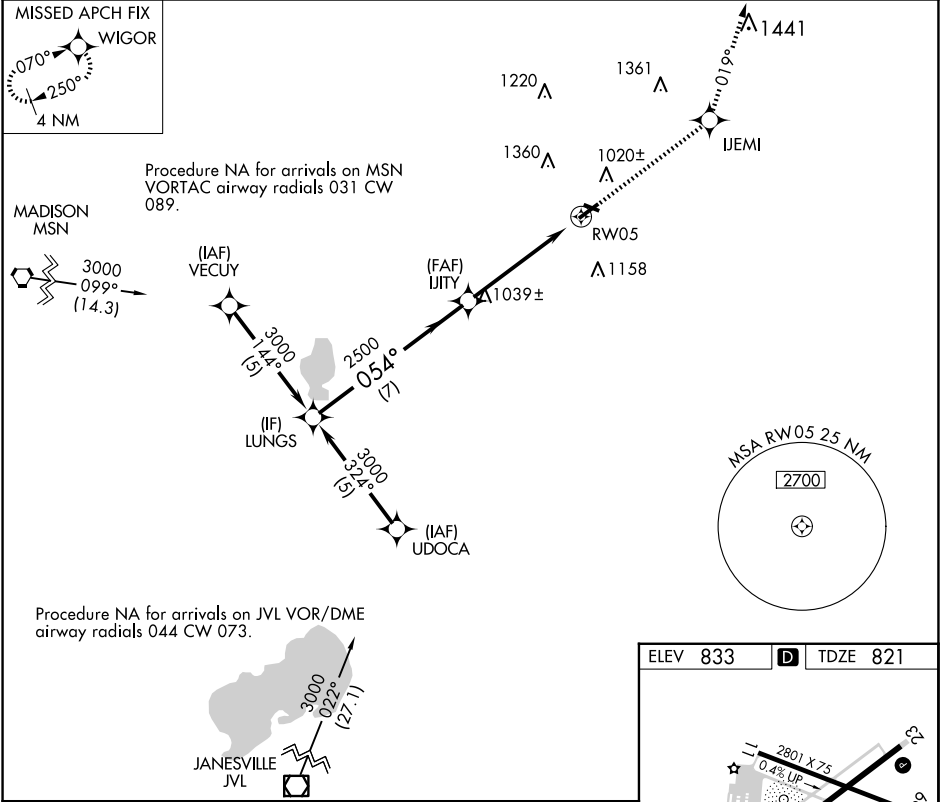
▼

Rwy 5 helicopter visibility reduction below ¾ SM NA. When local altimeter setting not received, use Dodge County altimeter setting and increase all MDAs 60 feet, increase LNAV Cat C visibility ½ SM. Circling Rwy 23 NA at night.

MISSED APPROACH:

Climb to 3000 direct IJEMI and left turn on 019° track to WIGOR and hold.

AWOS-3 119.975	MADISON APP CON ★ 119.15 343.7	UNICOM 122.8 (CTAF) ①
-------------------	-----------------------------------	--------------------------



LUNGS

3000

054°

IJITY

2500

3.04 TCH 50

RW05

7 NM

5.1 NM

3000

IJEMI

WIGOR

tr 019°

CATEGORY	A	B	C	D
LNAV MDA	1440-1	619 (700-1)	1440-1¾ 619 (700-1¾)	1440-2 619 (700-2)
CIRCLING	1440-1	607 (700-1)	1720-2¾ 887 (900-2¾)	1720-3 887 (900-3)

ELEV 833

D

TDZE 821

2801 X 75

0.4% UP

4429 X 75

054°

REIL Rwy 5 and 23 ①

MIRL Rwy 5-23 and 11-29 ①

EC-3, 10 JUL 2025 to 07 AUG 2025

EC-3, 10 JUL 2025 to 07 AUG 2025