

NDB RYV <b>371</b>	APP CRS <b>254°</b>	Rwy Idg TDZE Apt Elev	<b>4429</b> <b>823</b> <b>833</b>
-----------------------	------------------------	-----------------------------	---

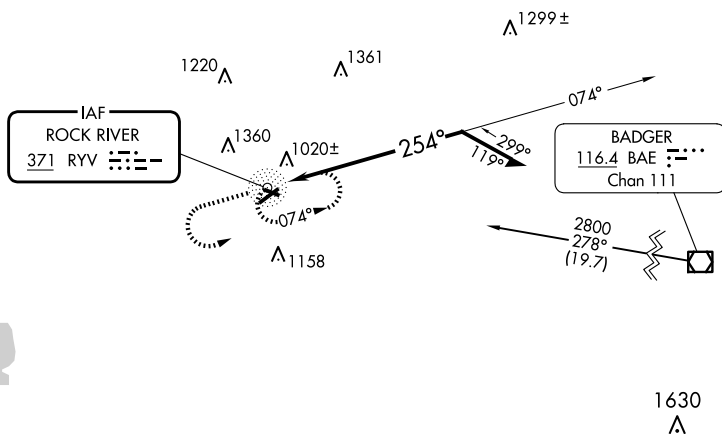
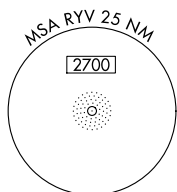
NDB RWY 23  
WATERTOWN MUNI (RYV)

**T** Rwy 23 helicopter visibility reduction below 1 SM NA. When local altimeter setting not received, use Dodge County altimeter setting and increase all MDA 60 feet, and increase visibility Cat A, C and D ¼ mile. Straight-In Rwy 23 NA at night, Circling Rwy 23 NA at night.

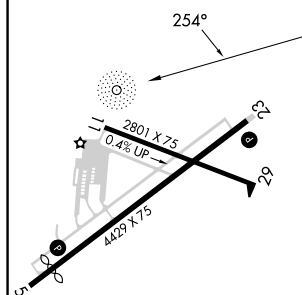
**MISSED APPROACH:** Climb to 2800 then left turn direct RYV NDB and hold.

AWOS-3  
119,975

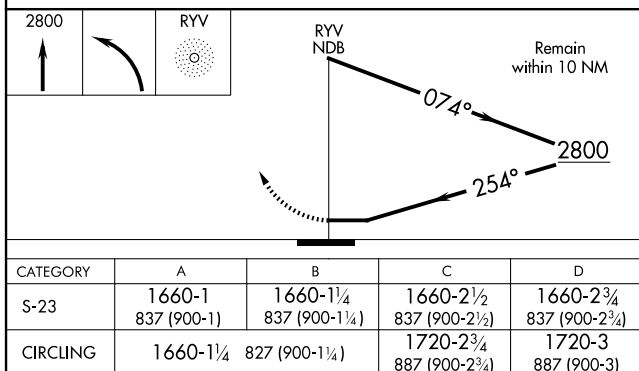
MADISON APP CON ★  
119.15 343.7

UNICOM  
122.8 (CTAF) **L**

ELEV 833	<b>D</b>	TDZE 823
----------	----------	----------



REIL Rwy 5 and 23 **L**  
MIRL Rwy 5-23 and 11-29 **L**



WATERTOWN, WISCONSIN

Amdt 2B 04NOV21

43°10'N-88°43'W

WATERTOWN MUNI (RYV)  
NDB RWY 23

NDB RWY 23