

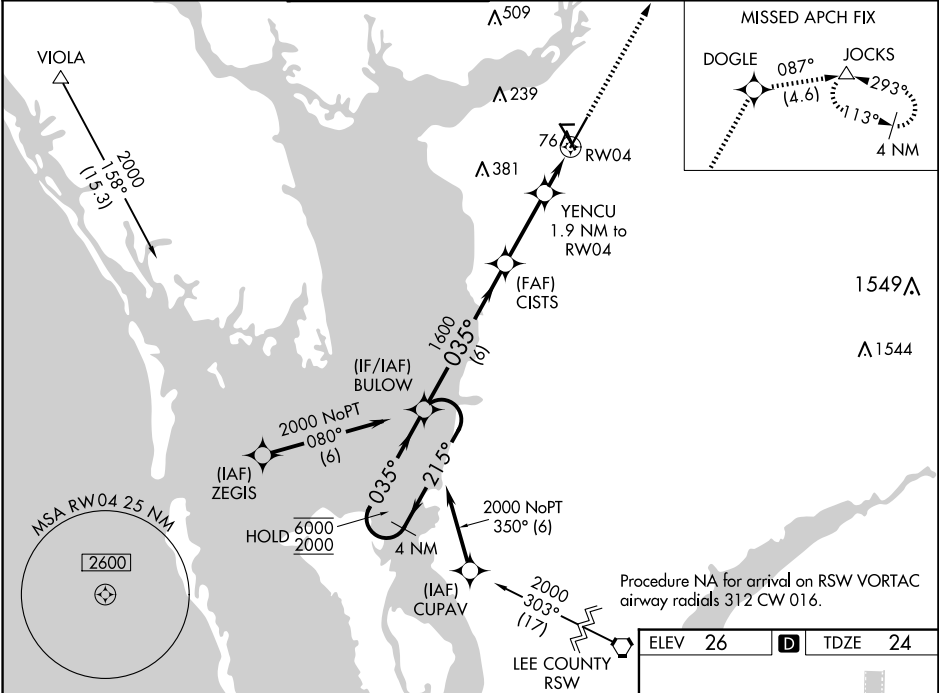
WAAS CH <b>48807</b> <b>W04A</b>	APP CRS <b>035°</b>	Rwy Idg TDZE <b>24</b> Apt Elev <b>26</b>	<b>7193</b>
--	------------------------	---	-------------

RNAV (GPS) RWY 4  
PUNTA GORDA (PGD)

RNP APCH - GPS.			
For uncompensated Baro-VNAV systems, LNAV/VNAV NA below 3°C or above 54°C.			

MISSED APPROACH: Climb to 2000 direct DOGLE and on track 087° to JOCKS and hold.

ATIS <b>135.675</b>	FORT MYERS APP CON ★ <b>127.05 306.2</b>	PUNTA GORDA TOWER ★ <b>121.0 (CTAF) 0</b>	GND CON <b>119.55</b>	CLNC DEL <b>119.55</b>	CLNC DEL <b>127.05</b> (When twr closed)	UNICOM <b>122.975</b>
------------------------	---	--	--------------------------	---------------------------	--	--------------------------



4 NM Holding Pattern		BULOW		2000 ↑		DOGLE ✱		tr 087°		JOCKS △	
6000 ← 215°				CISTS 1600		YENCU 1.9 NM to RW04		1.2 NM to RW04			
2000 → 035°				035°		680		RW04			
GP 3.00° TCH 50				1600							
		6 NM		2.9 NM		0.8 NM		1.2 NM			
CATEGORY		A		B		C		D			
LPV DA				256-¾		232 (300-¾)					
LNAV/ VNAV DA				393-1		369 (400-1)					
LNAV MDA		440-1		416 (500-1)		440-1½		416 (500-1½)			
CIRCLING		460-1 434 (500-1)		580-1 554 (600-1)		600-1½ 574 (600-1½)		740-2¼ 714 (800-2¼)			

