

PUNTA GORDA, FLORIDA

AL-6178 (FAA)

25107

WAAS CH 45905 W22A	APP CRS 215°	Rwy Idg 7193 TDZE 26 Apt Elev 26
--	------------------------	---

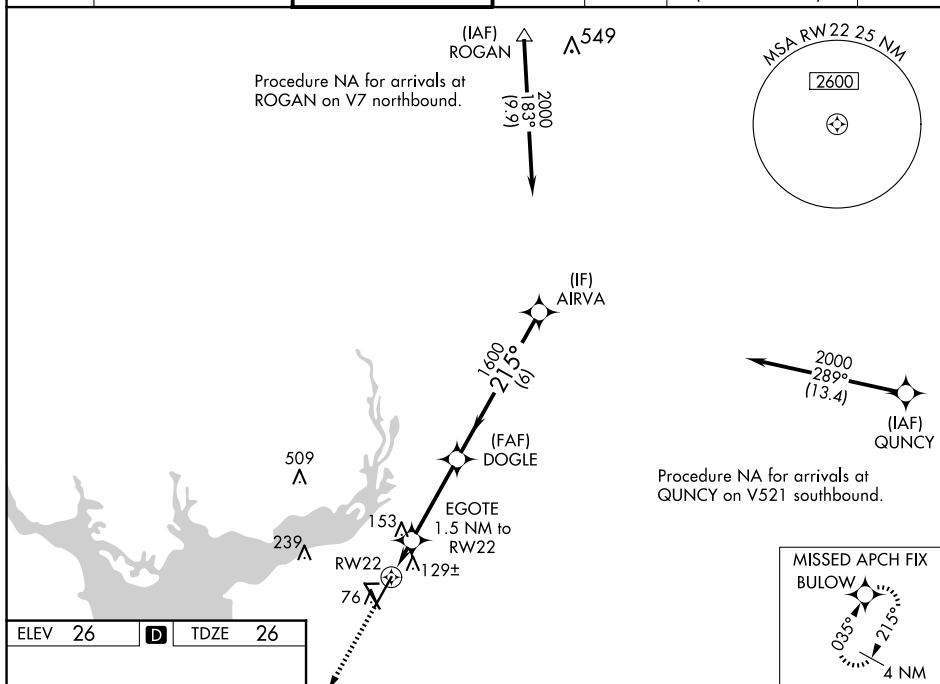
RNAV (GPS) RWY 22
PUNTA GORDA (PGD)

RNP APCH.

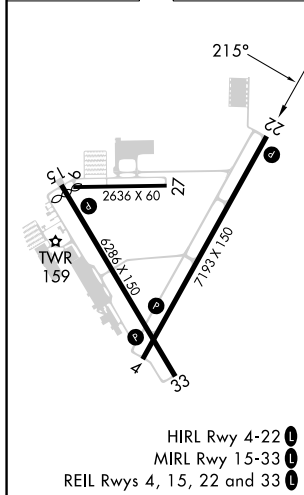
V Baro-VNAV NA when using Page Fld altimeter setting. For uncompensated Baro-VNAV systems, LNAV/VNAV NA below 1°C or above 54°C. When local altimeter setting not received, use Page Fld altimeter setting and increase LPV DA to 276, LNAV/VNAV DA to 360, and all MDAs 60 feet; increase LNAV Cats C and D visibility ¼ SM, and Circling Cats C and D visibility ½ SM.

MISSED APPROACH: Climb to 2000 direct BULOW and hold.

ATIS 135.675	FORT MYERS APP CON ★ 127.05 306.2	PUNTA GORDA TOWER ★ 121.0 (CTAF) 0	GND CON 119.55	CLNC DEL 119.55	CLNC DEL 127.05 (When twr closed)	UNICOM 122.975
------------------------	---	--	--------------------------	---------------------------	--	--------------------------



ELEV 26	D	TDZE 26
---------	----------	---------



BULOW

VGS I and descent angles not coincident
(VGS I Angle 3.00/TCH 31).

AIRVA

*RNAV only.

EGOTE
1.5 NM to
RW22

DOGLE
1600

215°

2000

540*

1600

GP 3.00°
TCH 40

CATEGORY	A	B	C	D
LPV DA	226-3/4	200 (200-3/4)		
RNAV/ VNAV DA	310-1	284 (300-1)		
RNAV MDA	420-1	394 (400-1)	420-1 1/8	394 (400-1 1/8)
C CIRCLING	460-1 434 (500-1)	580-1 554 (600-1)	600-1 1/2 574 (600-1 1/2)	740-2 1/4 714 (800-2 1/4)

PUNTA GORDA, FLORIDA

Amdt 2A 30JAN20

26°55'N-81°59'W

PUNTA GORDA (PGD)

RNAV (GPS) RWY 22

SE-3, 10 JUL 2025 to 07 AUG 2025

SE-3, 10 JUL 2025 to 07 AUG 2025