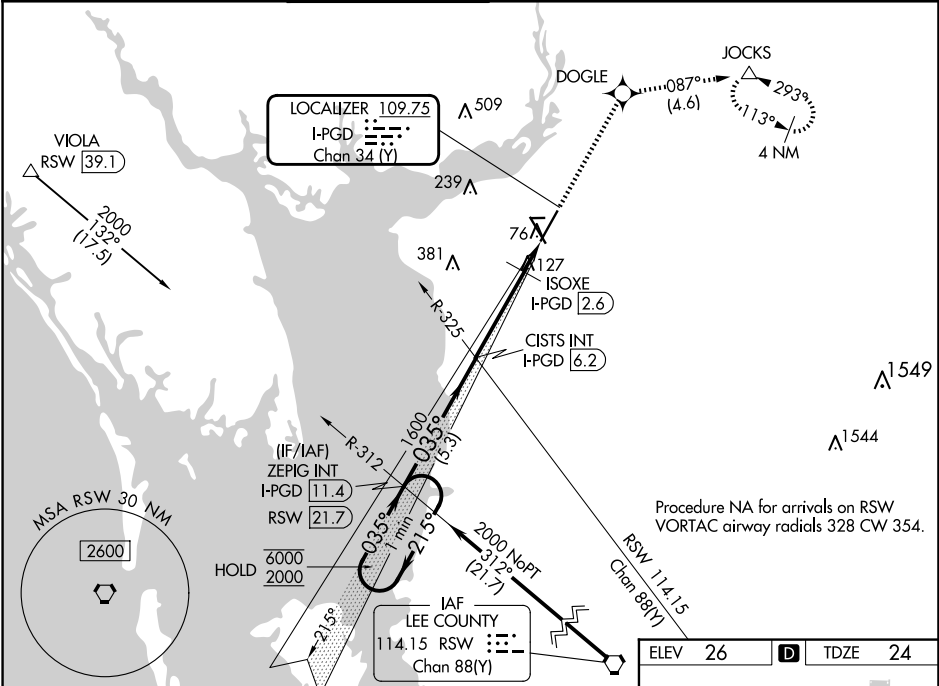


LOC/DME I-PGD	APP CRS	Rwy Idg	7193
109.75	035°	TDZE	24
Chan 34 (Y)		Apt Elev	26

ILS or LOC RWY 4  
PUNTA GORDA (PGD)

RNP APCH - GPS.			MISSED APPROACH: Climb to 2000 direct DOGLE and on track 087° to JOCKS and hold.			
ATIS	FORT MYERS APP CON ★	PUNTA GORDA TOWER ★	GND CON	CLNC DEL	CLNC DEL	UNICOM
135.675	127.05 306.2	121.0 (CTAF) 0	119.55	119.55	127.05 (When twr closed)	122.975



One Minute Holding Pattern		ZEPIC INT I-PGD 11.4		2000	DOGLE	tr 087°	JOCKS
6000	← 215°	035°	CISTS INT I-PGD 6.2	1600	ISOXE I-PGD 2.6	I-PGD 1.4	480
2000	→ 035°			1600	480		
GS 3.00° TCH 50		5.3 NM		3.5 NM	1.3 NM		
CATEGORY	A		B	C		D	
S-ILS 4	256-3/4		232 (300-3/4)				
S-LOC 4	480-1	456 (500-1)		480-1 3/8	456 (500-1 3/8)		
CIRCLING	480-1	580-1		600-1 1/2	740-2 1/4		
	454 (500-1)	554 (600-1)		574 (600-1 1/2)	714 (800-2 1/4)		
ISOXE FIX MINIMUMS (DME REQUIRED)							
S-LOC 4	380-1		356 (400-1)				
CIRCLING	460-1	580-1		600-1 1/2	740-2 1/4		
	434 (500-1)	554 (600-1)		574 (600-1 1/2)	714 (800-2 1/4)		

