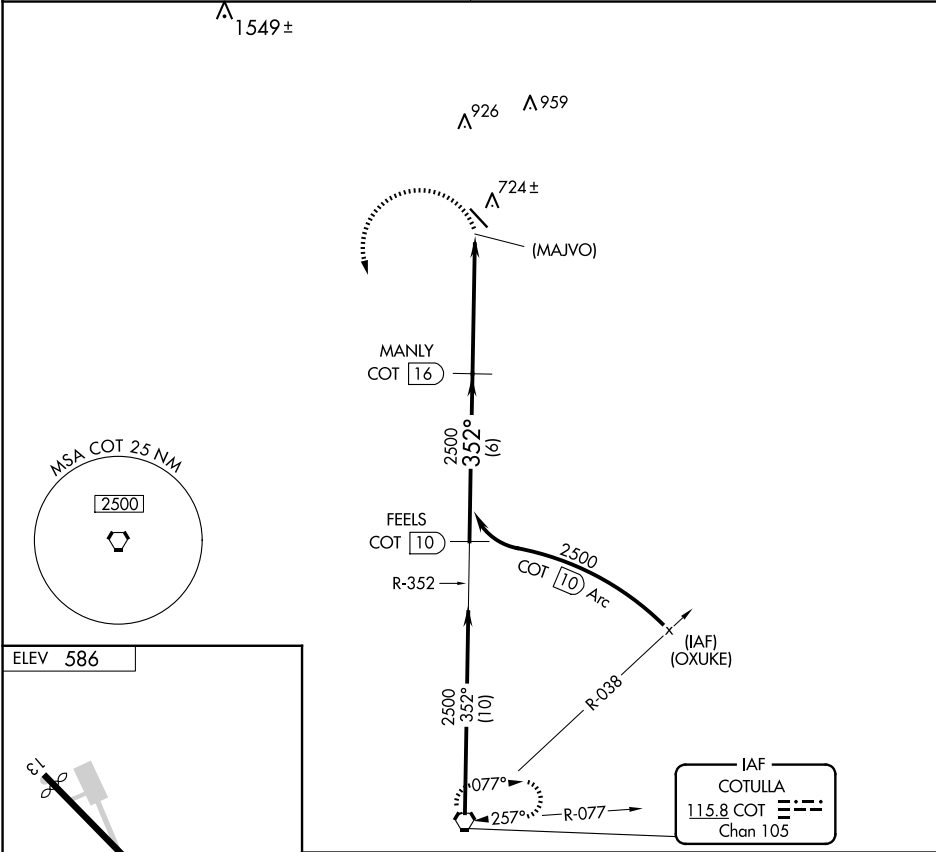


VORTAC COT 115.8 Chan 105	APP CRS 352°	Rwy Idg TDZE Apt Elev 586	N/A N/A 586
---	------------------------	--	--------------------------

VOR/DME or GPS-A
MC KINLEY FLD (T3Ø)

 NA	Use Cotulla altimeter setting. Procedure NA at night.	MISSED APPROACH: Climbing left turn to 2500 direct COT VORTAC and hold.
--------	--	--

HOUSTON CENTER 134.6 322.5	UNICOM 122.8 (CTAF) Ø
--------------------------------------	---------------------------------



ELEV 586			
Procedure Turn NA			
6 NM			
5 NM			
CATEGORY	A	B	C
CIRCLING	1120-1	534 (600-1)	1120-1½ 534 (600-1½)

SC-3, 10 JUL 2025 to 07 AUG 2025

SC-3, 10 JUL 2025 to 07 AUG 2025