

WAAS CH 99507 W01A	APP CRS 009°	Rwy Idg 5499 TDZE 990 Apt Elev 988
--	------------------------	---

RNAV (GPS) RWY 1

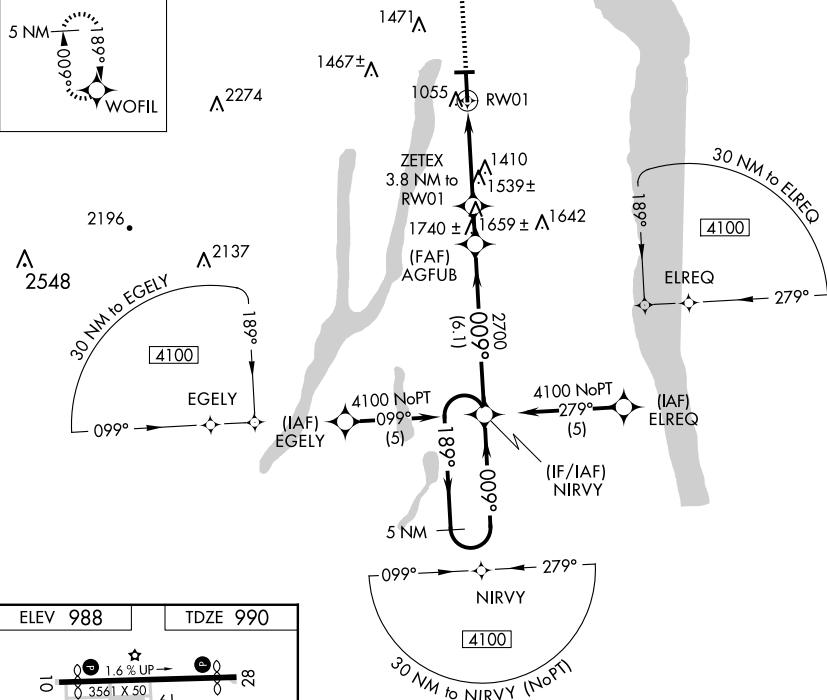
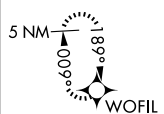
PENN YAN/YATES COUNTY (PEO)

T When local altimeter setting not received, use Elmira altimeter setting: increase LPV DA to 1433 feet and visibility all Cats $\frac{1}{4}$ SM; increase all MDA 80 feet and visibility LNAV Cat A and Circling Cat C $\frac{1}{4}$ SM and LNAV Cat C and D $\frac{1}{2}$ SM. DME/DME RNP-0.3 NA. Helicopter visibility reduction below $\frac{1}{4}$ SM NA.

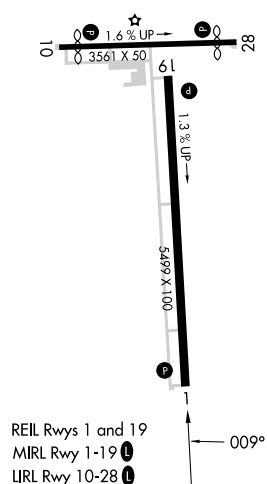
MISSED APPROACH:
Climb to 4000 direct
WOFIL and hold, continue
climb in hold to 4000.

ASOS 121.175	ELMIRA APP CON★ 124.3 257.8	UNICOM 123.0 (CTAF) 0
------------------------	---------------------------------------	---------------------------------

MISSED APCH FIX



ELEV 988		TDZE 990
----------	--	----------



4000 ↑	WOFIL 	VGS1 and RNAV glidepath not coincident (VGS1 Angle 3.00/TCH 28).			
* LNAV only.					
CATEGORY	A	B	C	D	
LPV DA	1360-1¼ 370 (400-1¼)				
LNAV MDA	1800-1 810 (900-1)	1800-1¼ 810 (900-1¼)	1800-2¼ 810 (900-2¼)	1800-2½ 810 (900-2½)	
CIRCLING	1800-1¼	812 (900-1¼)	1820-2½ 832 (900-2½)	1980-3 992 (1000-3)	