

WAAS CH 99517 W05A	APP CRS 048°	Rwy Idg 5002 TDZE 996 Apt Elev 1013
--	------------------------	--

RNAV (GPS) RWY 5

PICKENS COUNTY (LQK)

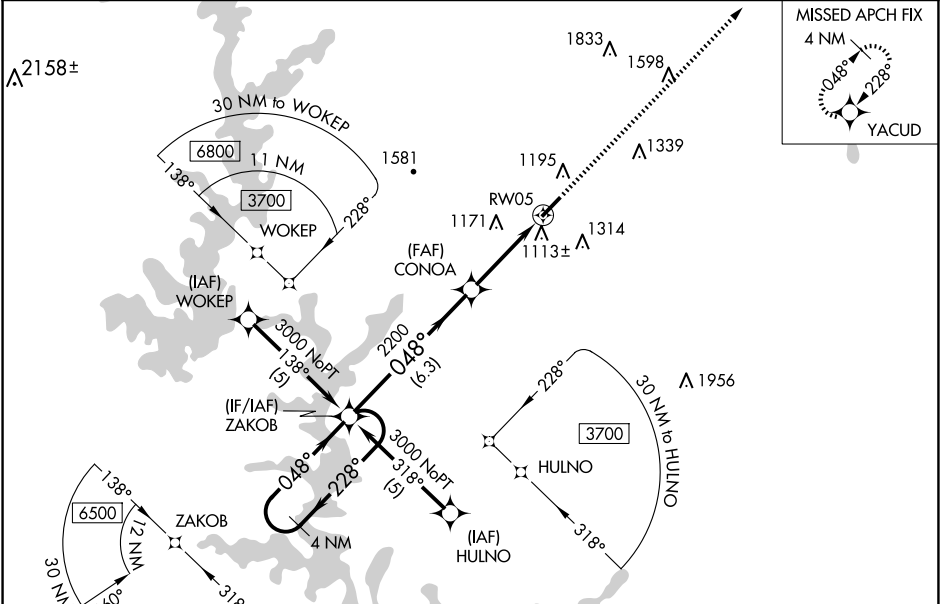
▼

NA

For uncompensated Baro-VNAV systems, LNAV/VNAV NA below -17°C (2°F) or above 46°C (114°F). DME/DME RNP-0.3 NA. Visibility reduction by helicopters NA. When local altimeter setting not received, use Clemson altimeter setting and increase LPV DA to 1292 feet and visibility all Cats ½ SM; increase LNAV/VNAV DA to 1487 feet; increase all MDAs 60 feet and LNAV Cat C and Circling Cat D visibility ½ SM, and LNAV Cat D visibility ½ SM. Baro-VNAV NA when using Clemson altimeter setting. VDP NA with Clemson altimeter setting.

MISSED APPROACH:
Climb to 4000 direct YACUD and hold.

AWOS-3 120.0	GREER APP CON ★ 118.8 270.275	UNICOM 122.8 (CTAF) 0
------------------------	---	---------------------------------



ELEV 1013	TDZE 996
------------------	-----------------

