

WAAS Ch <b>42817</b> <b>W23A</b>	APP CRS <b>228°</b>	Rwy Idg <b>5002</b> TDZE <b>1013</b> Apt Elev <b>1013</b>
--	------------------------	---

RNAV (GPS) RWY 23

PICKENS COUNTY (LQK)

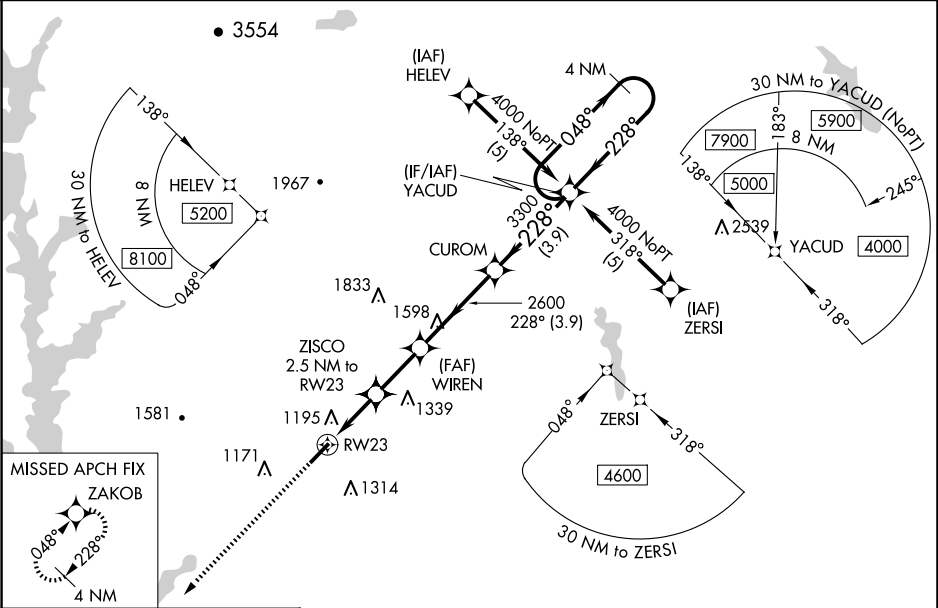
▼

▲ NA

For uncompensated Baro-VNAV systems, LNAV/VNAV NA below -17°C (2°F) or above 46°C (114°F). DME/DME RNP-0.3 NA. When local altimeter setting not received, use Clemson altimeter setting and increase LPV DA to 1356 feet and visibility all Cats ¼ SM; increase LNAV/VNAV DA to 1594 feet; increase all MDAs 60 feet and LNAV Cat C and Circling Cat D visibility ½ SM, increase LNAV Cat D visibility ½ SM. Baro-VNAV NA when using Clemson altimeter setting. VDP NA with Clemson altimeter setting.

MISSED APPROACH:  
Climb to 3000 direct ZAKOB and hold.

AWOS-3 <b>120.0</b>	GREER APP CON ★ <b>118.8 270.275</b>	UNICOM <b>122.8 (CTAF) 0</b>
------------------------	---	---------------------------------



ELEV 1013	TDZE 1013
-----------	-----------

