

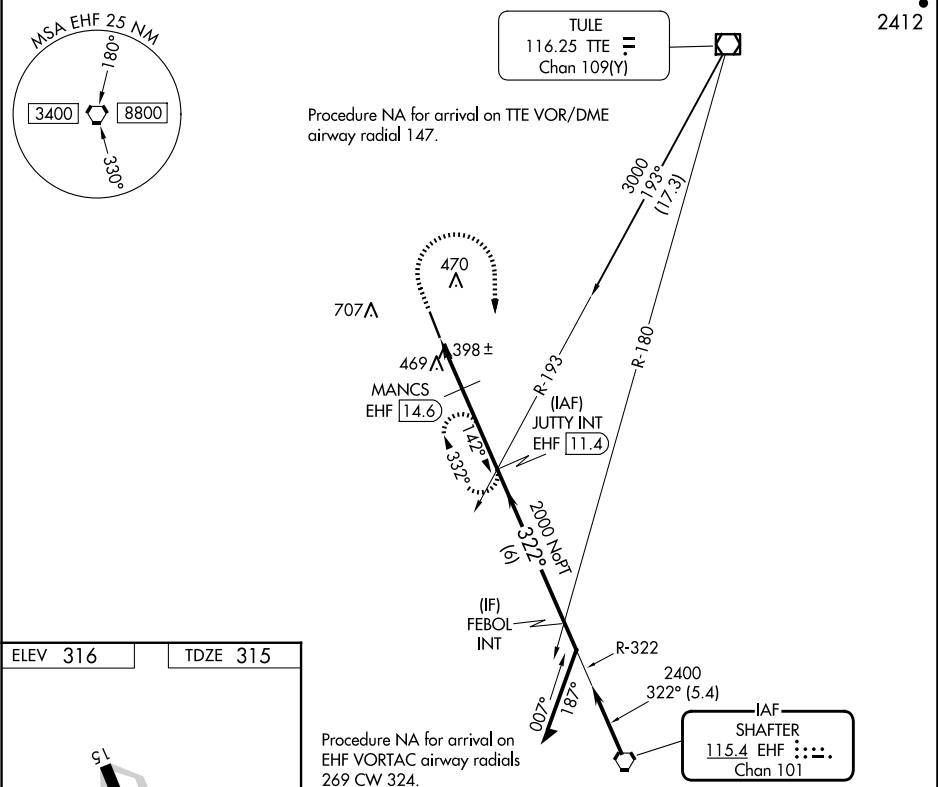
VORTAC EHF	APP CRS	Rwy Idg	5659
115.4	322°	TDZE	315
Chan 101		Apt Elev	316

VOR RWY 33

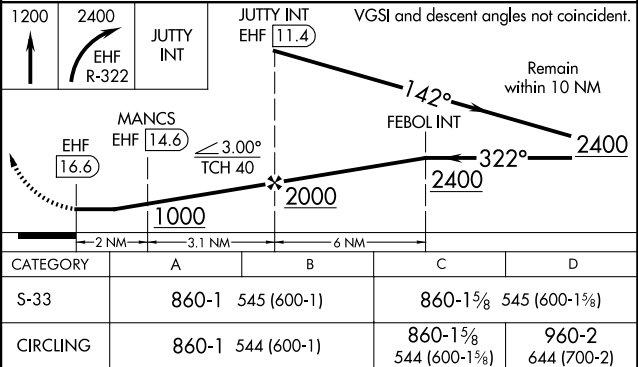
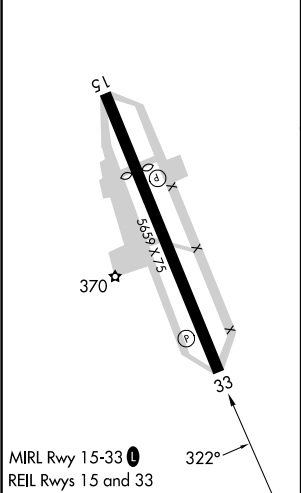
DELANO MUNI (DLO)

DME required.	MISSED APPROACH: Climb to 1200 then climbing right turn to 2400 on EHF VORTAC R-322 to JUTTY INT/EHF 11.4 DME and hold. Continue climb-in-hold to 2400.
<div><div></div> Circling NA southwest of Rwy 15-33.</div> <div><div></div> When local altimeter setting not received, procedure NA.</div>	

AWOS-3P 119.55	BAKERSFIELD APP CON★ 118.9	UNICOM 122.8 (CTAF) 0
-------------------	-------------------------------	--------------------------



ELEV 316	TDZE 315
----------	----------



SW-3, 10 JUL 2025 to 07 AUG 2025

SW-3, 10 JUL 2025 to 07 AUG 2025