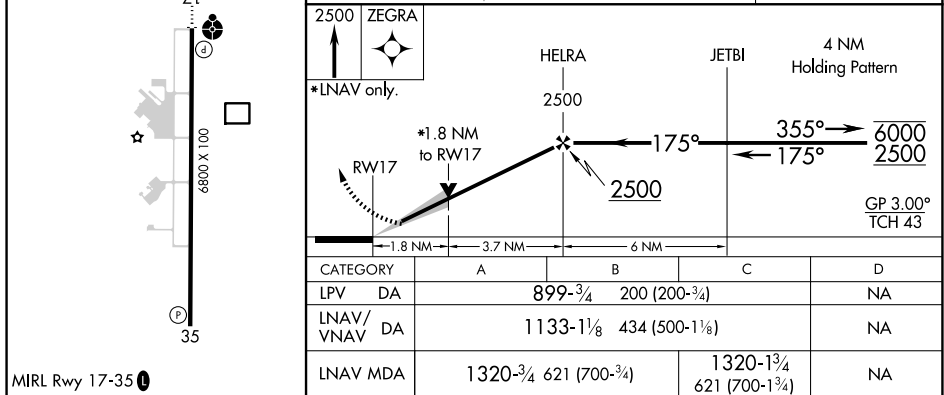
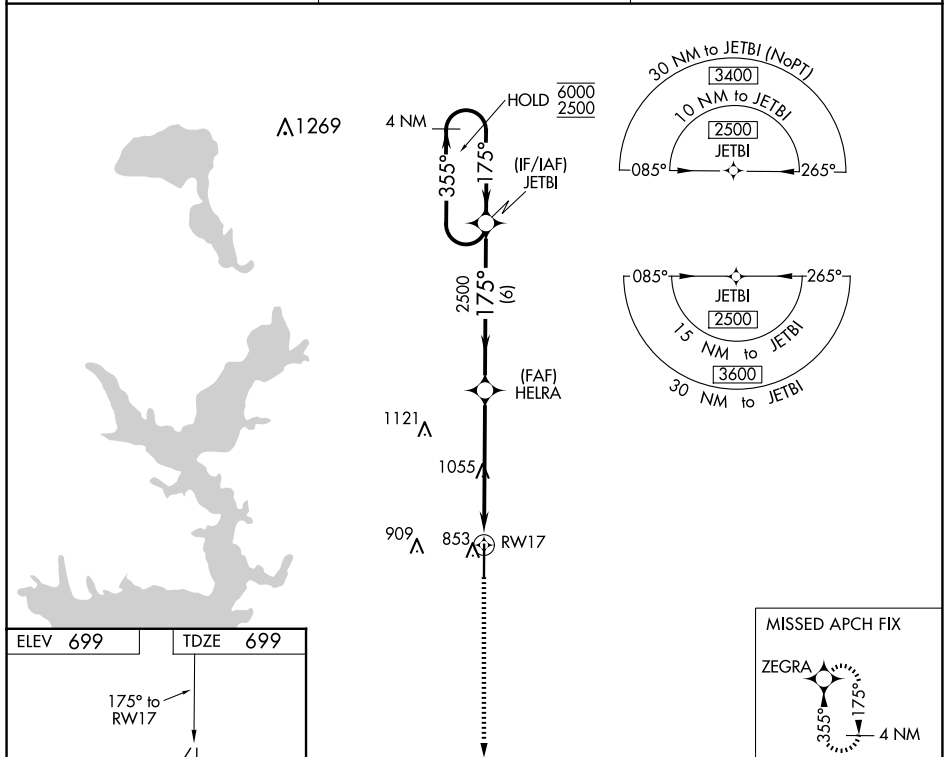


21336

WAAS CH <b>99518</b> <b>W17A</b>	APP CRS <b>175°</b>	Rwy Idg <b>6800</b> TDZE <b>699</b> Apt Elev <b>699</b>
--	------------------------	---

## RNAV (GPS) RWY 17

RNP APCH.		ODALS 	MISSED APPROACH: Climb to 2500 direct ZEGRA and hold.
Inop table does not apply to LPV and LNAV Cat C. For uncompensated Baro-VNAV systems, LNAV/VNAV NA below -16°C or above 54°C. For inop ALS, increase LNAV/VNAV Cat A/B visibility to 1 1/4 SM.			
AWOS-3 <b>124.175</b>	FORT WORTH CENTER <b>124.75 323.0</b>	UNICOM <b>123.05</b> (CTAF)	



DURANT, OKLAHOMA  
Amdt 2 05DEC19

33°56'N-96°24'W

DURANT RGNL/EAKER FLD (DUA)  
RNAV (GPS) RWY 17

SC-1, 10 JUL 2025 to 07 AUG 2025