

VORTAC MSN 108.6 Chan 23	APP CRS 254°	Rwy Idg TDZE Apt Elev	4001 928 928
--	------------------------	-----------------------------	---

VOR RWY 28

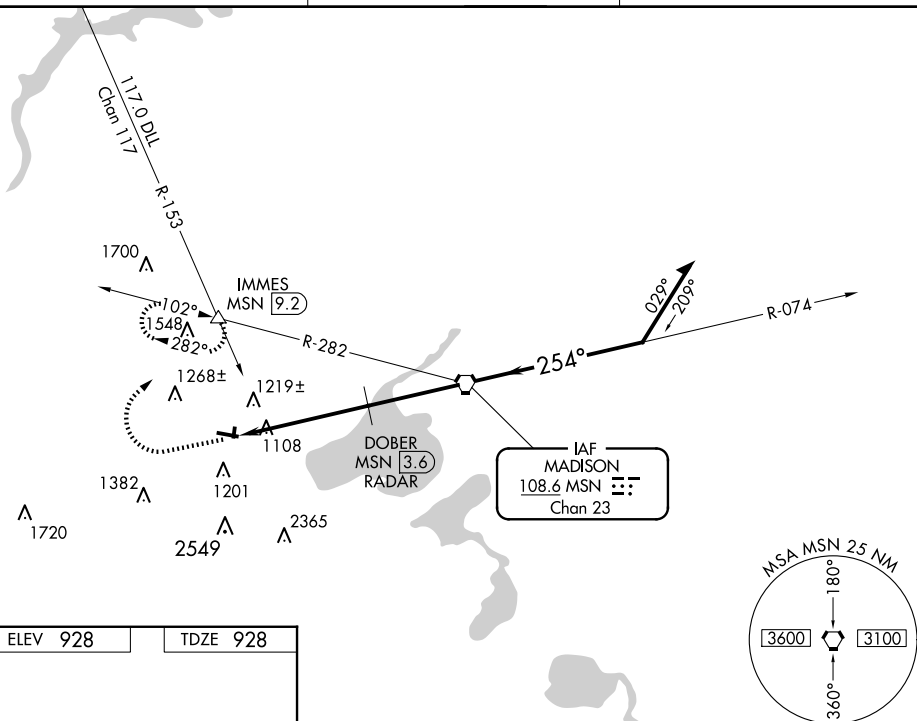
MIDDLETON MUNI/MOREY FLD (C29)

T When local altimeter setting not received, use Dane County Rgnl/Truax Fld
A altimeter setting and increase all MDAs 40 feet and S-28 visibility Cat C $\frac{1}{8}$
SM, and Circling visibility Cat C $\frac{1}{4}$ SM. RADAR or DME required. Circling
NA to Rwy 15 and 19. Rwy 28 helicopter visibility reduction below 1 SM NA.
Straight-in Rwy 28 NA at night. Circling Rwy 28 NA at night.

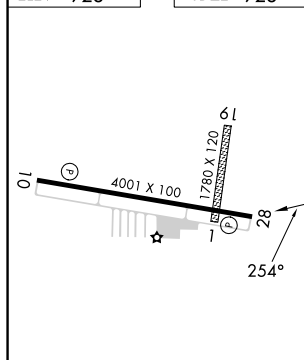
MISSED APPROACH: Climb to 2000 then climbing right turn to 3500 on heading 020° and MSN R-282 to IMMES INT/9.2 DME and hold.

AWOS-3
118.675

MADISON APP CON★
135.45 343.7

UNICOM
123.0 (CTAF) **L**

ELEV 928		TDZE 928
----------	--	----------



2000 ↑	3500 	MSN R-282	IMMES △	VGSJ and descent angles not coincident (VGSJ Angle 4.00/TCH 36).
CATEGORY	A	B	C	D
S-28	1500-1	572 (600-1)	1500-1 $\frac{5}{8}$ 572 (600-1 $\frac{5}{8}$)	NA
CIRCLING	1560-1 632 (700-1)	1640-1 712 (800-1)	1660-2 732 (800-2)	NA

MIRL Rwy 10-28 **L**
REIL Rwy 10 and 28 **L**
FAF to MAP 8

Knots	60	90	120	150	180
Min:Sec	8:24	5:36	4:12	3:22	2:48