

REIDSVILLE, GEORGIA

AL-6168 (FAA)

25163

WAAS CH 42547 W29A	APP CRS 294°	Rwy Ldg 5003 TDZE 196 Apt Elev 196
--	------------------------	---

RNAV (GPS) RWY 29

SWINTON SMITH FLD AT REIDSVILLE MUNI (RVJ)

RNP APCH - GPS.

RADAR required for procedure entry when R-3005 A/B/C/E active.

T Rwy 29 helicopter visibility reduction below $\frac{3}{4}$ SM NA. For uncompensated Baro-VNAV systems, LNAV/VNAV NA below -15°C or above 54°C. Hold-in-lieu NA when R-3005 A/B/C/E active.

MISSED APPROACH: Climb to 3000 direct FEVNA and hold, continue climb-in-hold to 3000.

AWOS-3PT

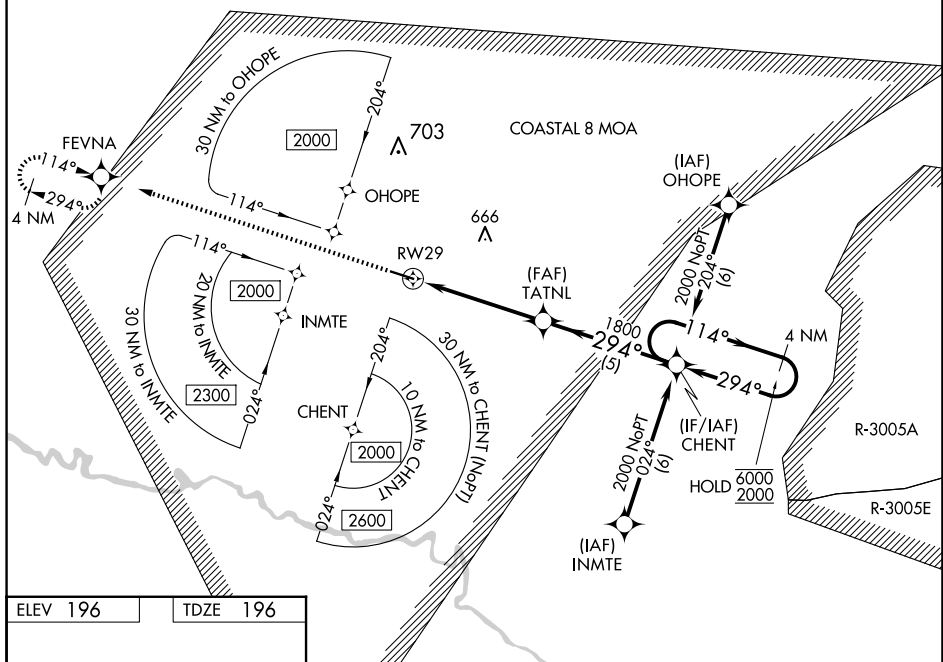
128.325

JACKSONVILLE CENTER

127.575 269.025

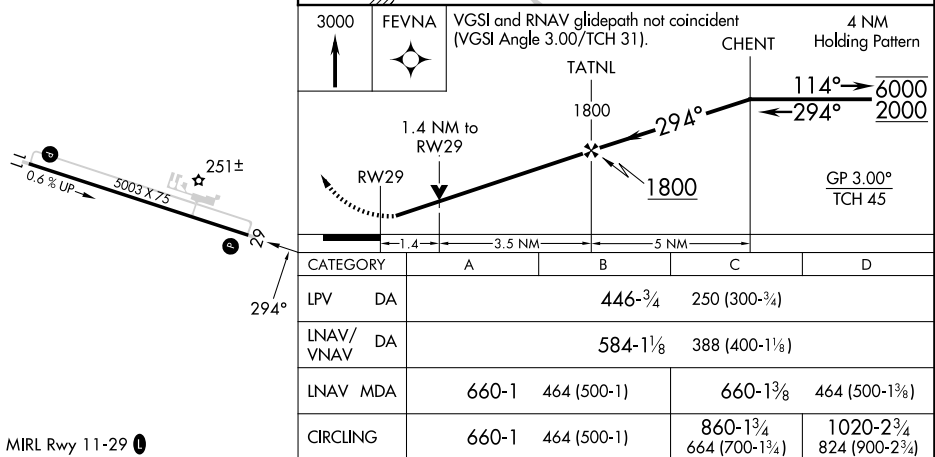
CTAF

122.9 L



ELEV 196

TDZE 196



REIDSVILLE, GEORGIA

Orig 12JUN25

SWINTON SMITH FLD AT REIDSVILLE MUNI (RVJ)

32°04'N-82°09'W

RNAV (GPS) RWY 29

SE-4, 10 JUL 2025 to 07 AUG 2025

SE-4, 10 JUL 2025 to 07 AUG 2025