

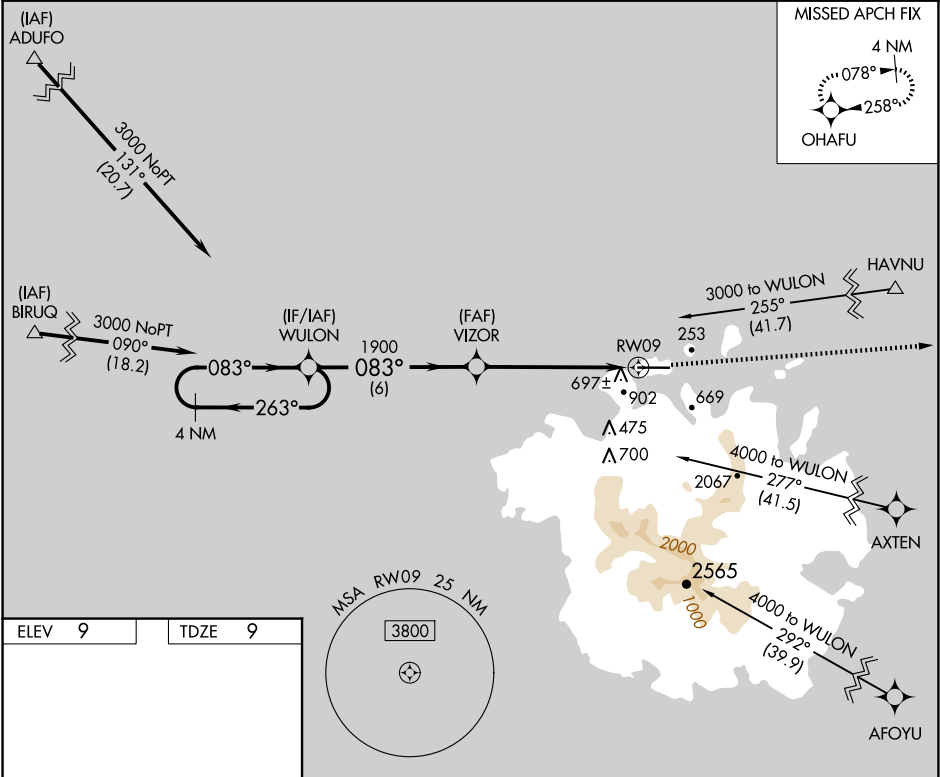
APP CRS	Rwy Idg	6600
083°	TDZE	9
	Apt Elev	9

RNAV (GPS) X RWY 9
POHNPEI INTL (PNI)(PTPN)

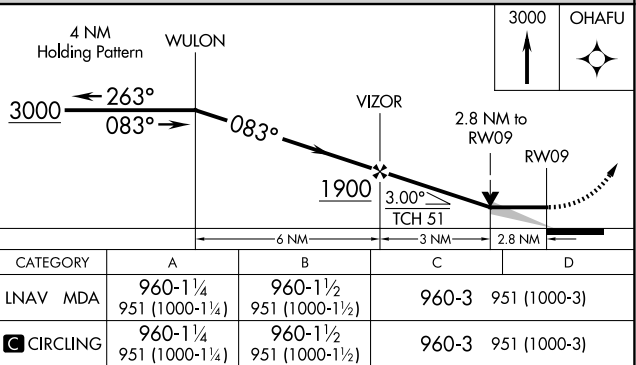
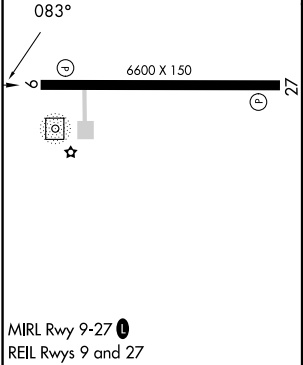
Obtain local altimeter setting on CTAF; when not received, procedure NA. Circling NA south of Rwy 9-27. Procedure NA at night except by prior arrangement for runway lights. DME/DME RNP-0.3 NA. No controlled airspace below 5500. Ships with maximum height of 150 feet MSL may traverse Pohnpei Channel 400 feet off approach end of runway, closing airport at times.

MISSED APPROACH:
Climb to 3000 direct
OHAFU and hold.

POHNPEI RADIO
123.6 (CTAF) 0



ELEV 9	TDZE 9
--------	--------



PAC, 12 JUN 2025 to 07 AUG 2025

PAC, 12 JUN 2025 to 07 AUG 2025