

| | | |
|---------|----------|------|
| APP CRS | Rwy Idg | 6600 |
| 083° | TDZE | 9 |
| | Apt Elev | 9 |

RNAV (RNP) Z RWY 9

POHNPEI INTL (PNI)(PTPN)

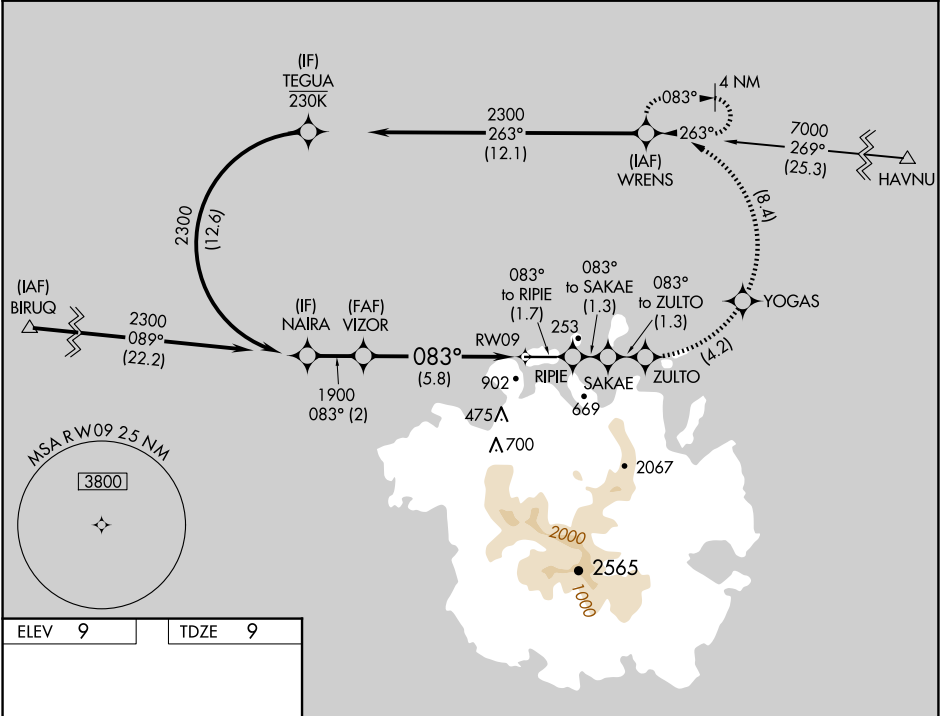
▼

Obtain local altimeter setting on CTAF; when not received, procedure NA. For uncompensated Baro-VNAV systems, procedure NA below 20°C (68°F) or above 54°C (130°F). Missed approach requires RNP less than 1.0. RF required. GPS required. No controlled airspace below 5500 feet.

MISSED APPROACH: (Do not exceed 230K until WRENS) Climb to 2300 on the RNAV missed approach route to WRENS and hold.

POHNPEI RADIO

123.6 (CTAF) 





ELEV 9


TDZE 9

083°






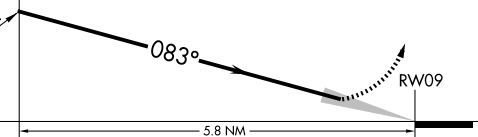
6600 X 150





MIRL Rwy 9-27 

REIL Rwy 9 and 27

| | | | | | |
|-------------------------|---|---|---|---------|---|
| 2300 | RIPIE | SAKAE | ZULTO | YOGAS | WRENS |
| ↑ tr 083° |  | tr 083° |  | tr 083° |  |
| | | |  | | |
| | | |  | | |
| VIZOR | | | See planview for multiple IF locations. | | |
| Procedure Turn NA | 1900 |  | | | |
| GP 3.00° TCH 50 | | | | | |
| CATEGORY | A | B | C | D | |
| RNP 0.15 DA | 259-1 250 (300-1) | | | | |
| AUTHORIZATION REQUIRED | | | | | |