

APP CRS	Rwy Idg	6600
258°	TDZE	9
	Apt Elev	9

RNAV (GPS) RWY 27

POHNPEI INTL (PNI)(PTPN)

▼

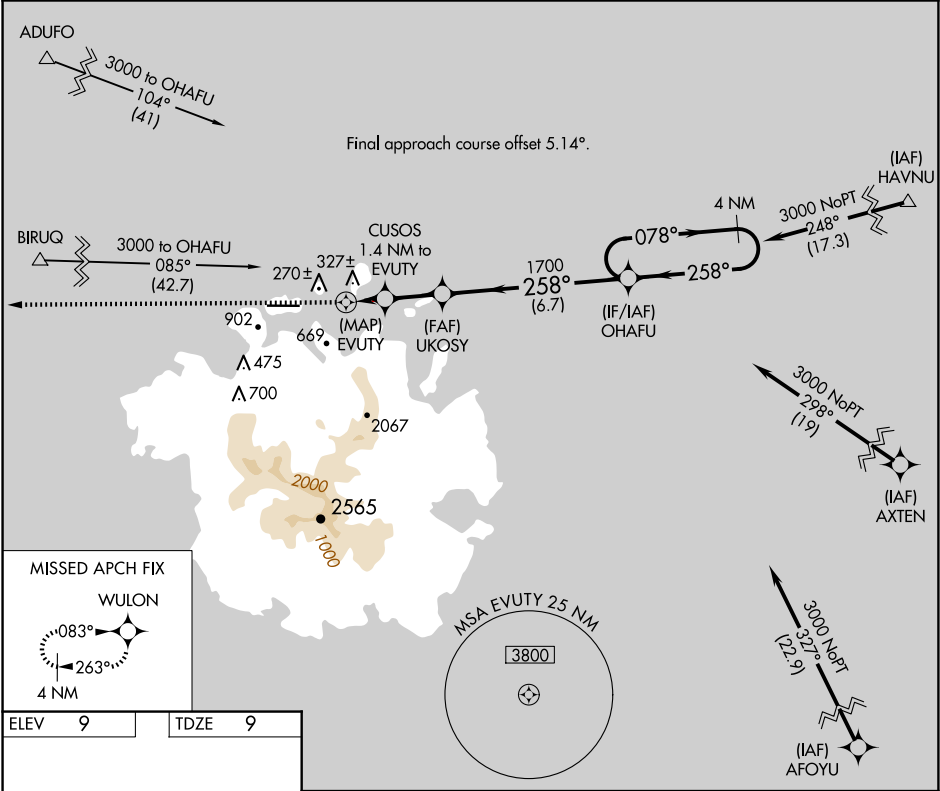
⚠

Obtain local altimeter setting on CTAF; when not received, procedure NA. Circling NA south of Rwy 9-27. Procedure NA at night except by prior arrangement for runway lights. DME/DME RNP-0.3 NA. No controlled airspace below 5500. Ships with maximum height of 150 feet MSL may traverse Pohnpei Channel 400 feet off approach end of runway 9, closing airport at times.

MISSED APPROACH:
Climb to 3000 direct WULON and hold.

POHNPEI RADIO

123.6 (CTAF) 0



ELEV 9		TDZE 9	
MIRL Rwy 9-27 0		REIL Rws 9 and 27	
3000 WULON		OHAFU Holding Pattern	
CUSOS 1.4 NM to EVUTY		OHAFU 078° → 3000	
EVUTY 1040		OHAFU 258° ← 3000	
UKOSY 1700		OHAFU 258° ← 3000	
OHAFU 1700		OHAFU 258° ← 3000	
CATEGORY A		CATEGORY B	
LNAV MDA 720-2		LNAV MDA 711 (800-2)	
CIRCLING 720-2		CIRCLING 711 (800-2)	
		720-2¼ 711 (800-2¼)	