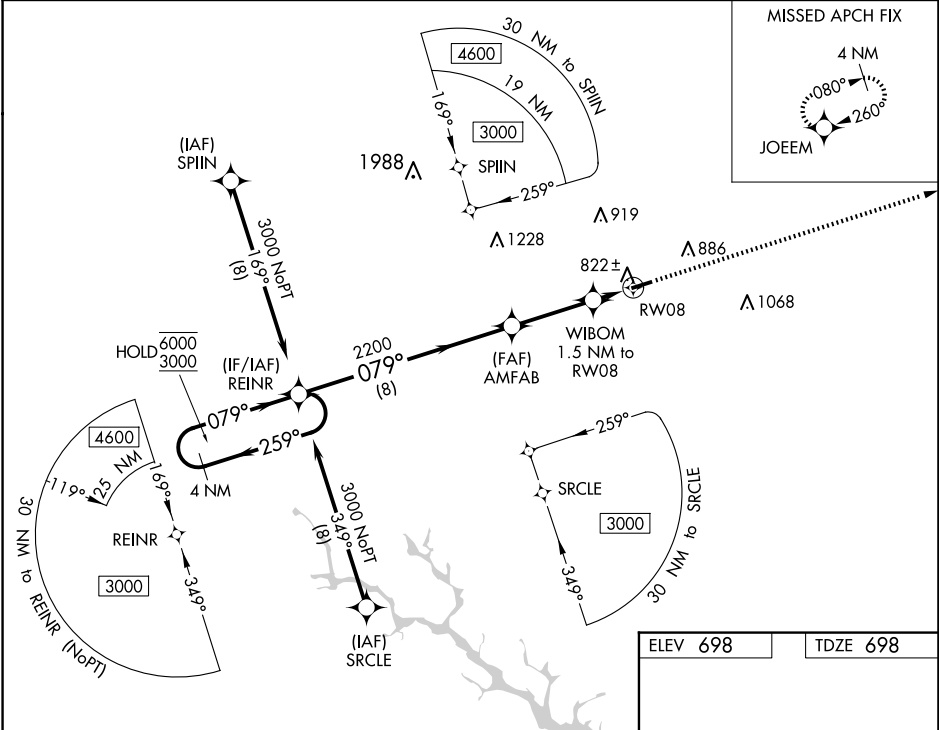


WAAS CH 72635 W08A	APP CRS 079°	Rwy Idg TDZE 698 Apt Elev 698	4051
--	------------------------	---	-------------

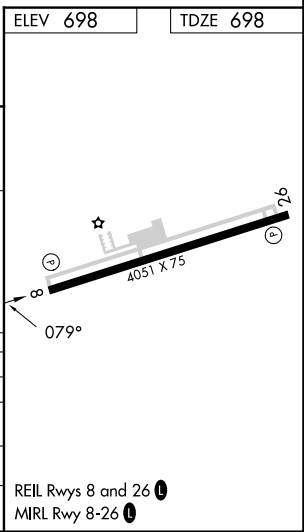
RNAV (GPS) RWY 8
LAURENS COUNTY (LUX)

RNP APCH-GPS. ▼ Rwy 8 helicopter visibility reduction below ¾ SM NA. For uncompensated Baro-VNAV systems, LNAV/VNAV NA below -16°C or above 54°C.	MISSED APPROACH: Climb to 3000 direct JOEEM and hold.
--	---

AWOS-3 123.975	GREER APP CON ★ 120.6 350.2	UNICOM 122.8 (CTAF) ①
--------------------------	---------------------------------------	---------------------------------



4 NM Holding Pattern REINR		VGSI and RNAV glidepath not coincident (VGSI Angle 3.00/TCH 45).		3000 JOEEM	
6000 ← 259°		2200		*RNAV only.	
3000 → 079°		2200		WIBOM 1.5 NM to RW08	
GP 3.00° TCH 54		2200		RW08	
		8 NM		3.1 NM	
				1.5 NM	
CATEGORY		A	B	C	D
LPV DA		948-¾	250 (300-¾)		NA
LNAV/VNAV DA		957-¾	259 (300-¾)		NA
LNAV MDA		1080-1	382 (400-1)		NA
CIRCLING		1200-1	502 (600-1)		NA



SE-2, 10 JUL 2025 to 07 AUG 2025

SE-2, 10 JUL 2025 to 07 AUG 2025