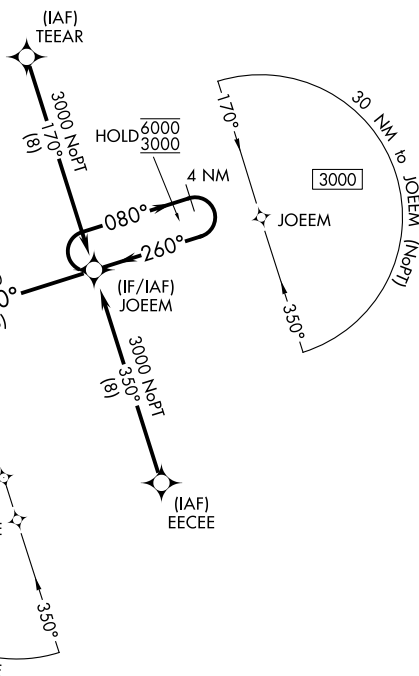
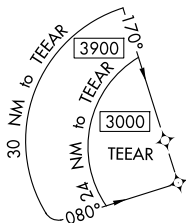



23110

# RNAV (GPS) RWY 26

## LAURENS COUNTY (LUX)

**MISSED APPROACH:** Climb to 3000 direct REINR and hold.

UNICOM  
122.8 (CTAF) **L**<sup>1988</sup> $^{1228}_{\Lambda}$ 

919

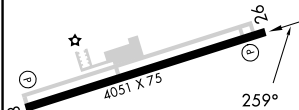
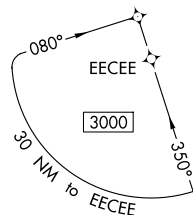


(FAF)  
EQADE

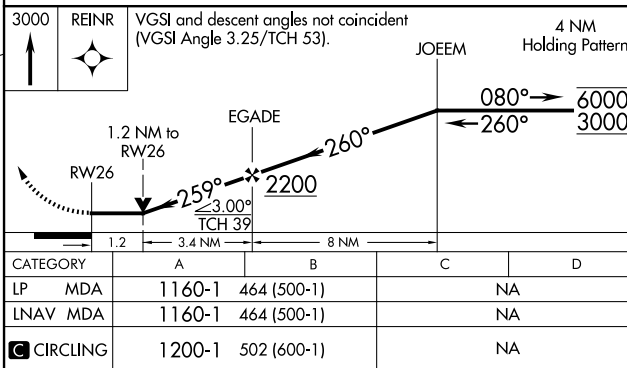
2200  
240° -

ELEV 698

TDZE 696



REIL Rwy 8 and 26 **L**  
MIRL Rwy 8-26 **L**



LAURENS COUNTY (LUX)  
RNAV (GPS) RWY 26

SE-2, 10 JUL 2025 to 07 AUG 2025