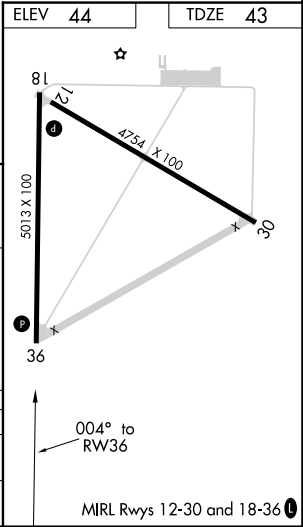
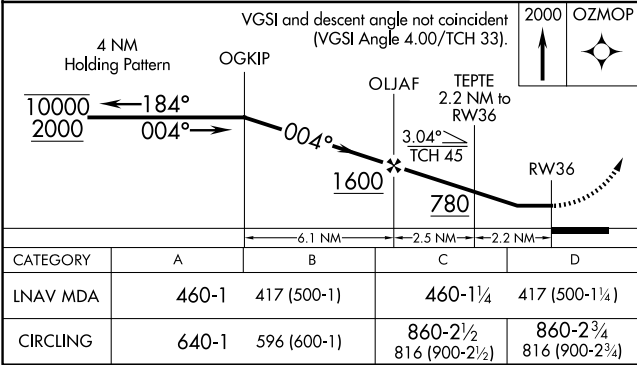
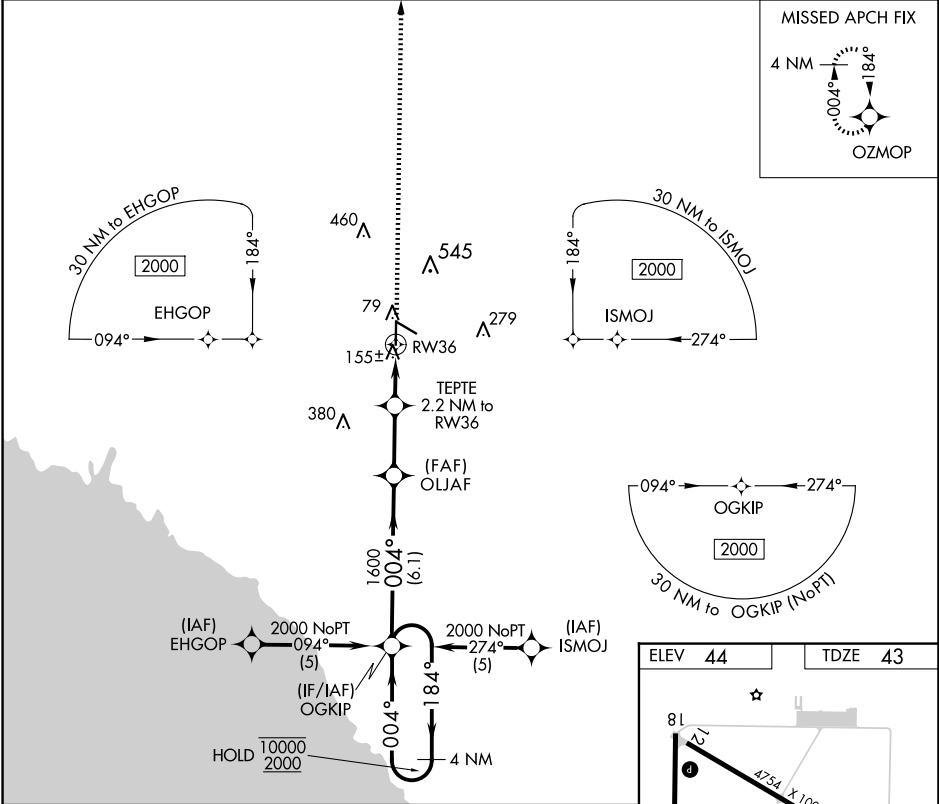


APP CRS	Rwy Idg	5013
004°	TDZE	43
	Apt Elev	44

RNAV (GPS) RWY 36
PERRY-FOLEY (F'PY)

RNP APCH.	MISSED APPROACH: Climb to 2000 direct OZMOP and hold.
<div><div></div><div>Circling Rwy 12 NA at night. Procedure NA at night.</div></div> <div><div></div><div>Rwy 36 helicopter visibility reduction below 1 SM NA.</div></div>	

AWOS-3PT 118.375	JACKSONVILLE CENTER 127.8 352.0	UNICOM 122.8 (CTAF) 0
---------------------	------------------------------------	--------------------------



SE-3, 10 JUL 2025 to 07 AUG 2025

SE-3, 10 JUL 2025 to 07 AUG 2025