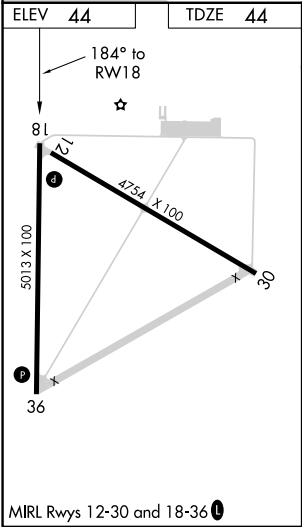
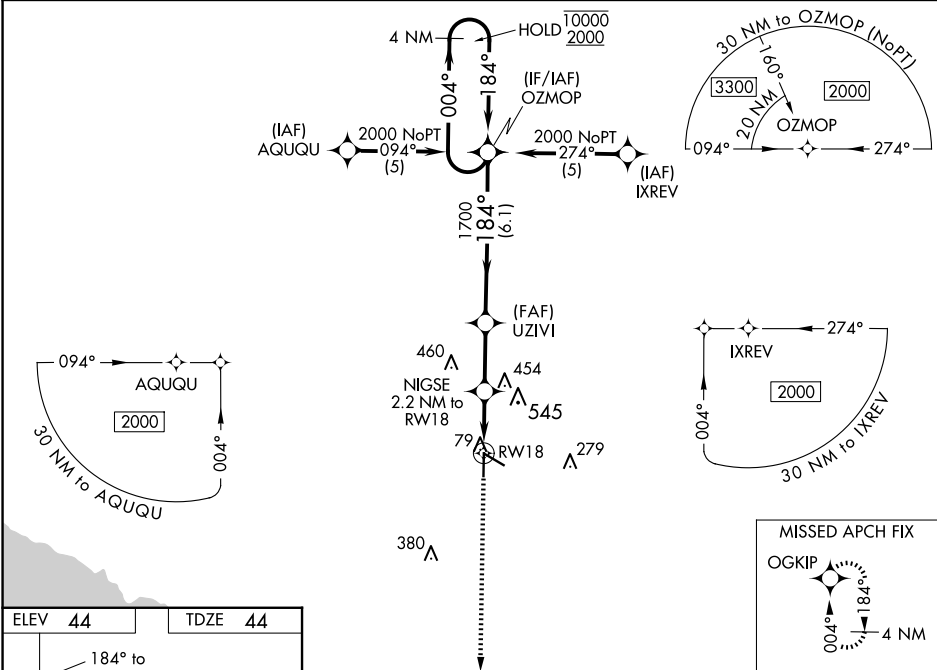


WAAS CH <b>49019</b> <b>W18A</b>	APP CRS <b>184°</b>	Rwy Idg <b>5013</b> TDZE <b>44</b> Apt Elev <b>44</b>
--	------------------------	---

RNAV (GPS) RWY 18  
PERRY-FOLEY (F'PY)

RNP APCH. Circling to Rwy 36, 12 NA at night. Rwy 18 helicopter visibility reduction below ¾ SM NA. For uncompensated Baro-VNAV systems, LNAV/VNAV NA below -15°C or above 54°C.	MISSED APPROACH: Climb to 2000 direct OZMOP and hold.
---	---

AWOS-3PT <b>118.375</b>	JACKSONVILLE CENTER <b>127.8 352.0</b>	UNICOM <b>122.8 (CTAF) 0</b>
----------------------------	---	---------------------------------



2000

↑

OGKIP

✦

VGSI and RNAV glidepath not coincident  
(VGSI Angle 4.00/TCH 35).

\*LNAV only.

NIGSE

2.2 NM to RW18

UZIVI

1700

OZMOP

4 NM Holding Pattern

004° →

10000

← 184°

2000

GP 3.20°

TCH 60

1.4 NM

0.8

2.5 NM

6.1 NM

840\*

1700

1.4 NM

0.8

2.5 NM

6.1 NM

840\*

1700

CATEGORY	A	B	C	D
LPV DA	356-1 312 (400-1)			NA
LNAV/VNAV DA	977-3 933 (1000-3)			NA
LNAV MDA	660-1	616 (700-1)	660-1¾ 616 (700-1¾)	660-2 616 (700-2)
CIRCLING	660-1	616 (700-1)	860-2½ 816 (900-2½)	860-2¾ 816 (900-2¾)