

NDB ATA <u>347</u>	APP CRS 053°	Rwy Idg 3800 TDZE 280 Apt Elev 280
------------------------------	------------------------	---

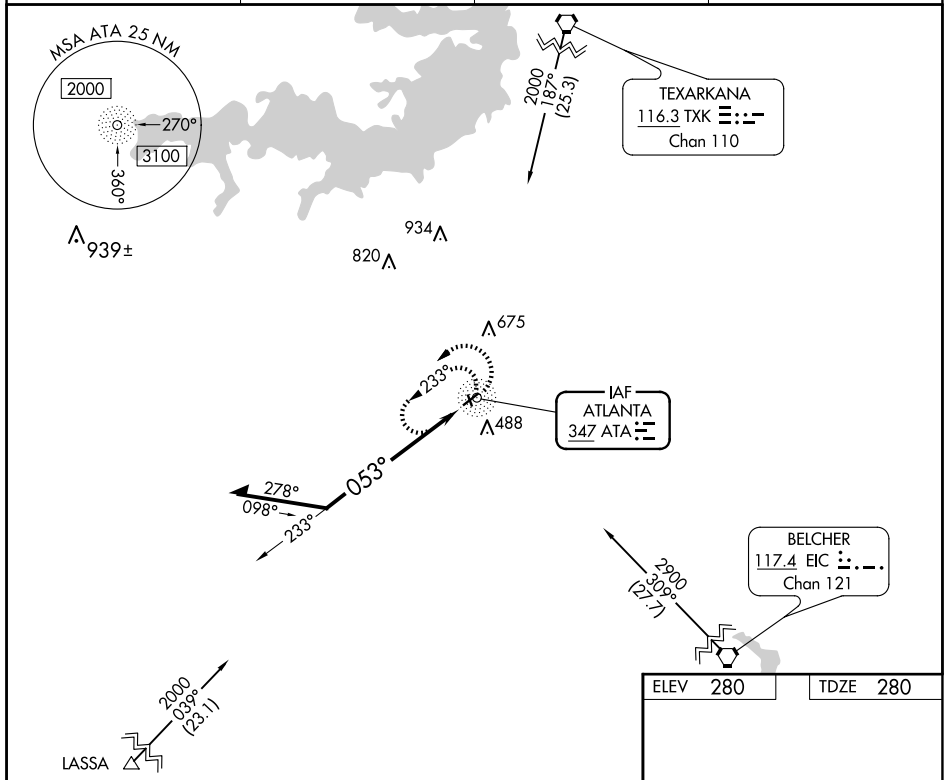
NDB RWY 5

HALL-MILLER MUNI (ATA)

▼ Helicopter visibility reduction below 1 SM NA. Use Texarkana altimeter setting, when not received use Mount Pleasant altimeter setting and increase all MDA 40 feet and all Cat B visibility $\frac{1}{4}$ mile. Procedure NA at night.

MISSED APPROACH:
Climbing left turn to 2000 in
ATA NDB holding pattern.

AWOS-3 118.250	TXK ASOS 120.2	FORT WORTH CENTER 123.925 269.475	CTAF 122.9 0
--------------------------	--------------------------	---	------------------------



Remain within 10 NM

2000

233°

053°

ATA NDB

0 10 NM

2000 ATA