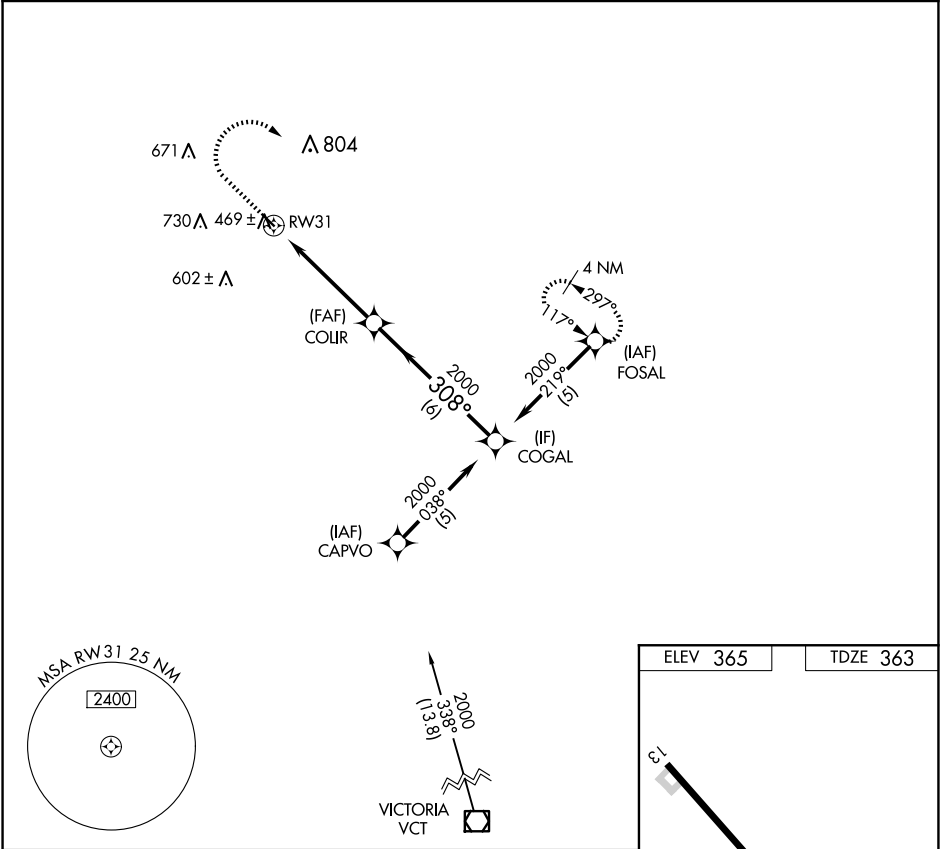


APP CRS	Rwy Idg	3444
308°	TDZE	363
	Apt Elev	365

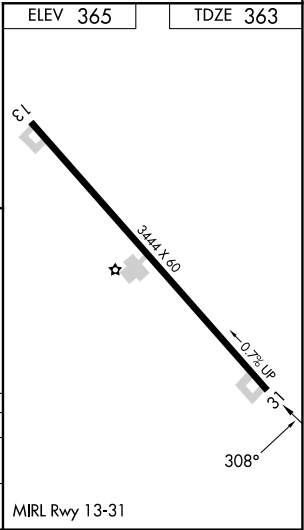
RNAV (GPS) RWY 31
YOAKUM MUNI (T85)

RNP APCH-GPS.	MISSED APPROACH: Climb to 1000 then climbing right turn to 2000 direct FOSAL and hold.
▼ Use Victoria Rgnl altimeter setting. Procedure NA at night.	
▲ NA Rwy 31 helicopter visibility reduction below ¾ SM NA.	

VCT ASOS 119.025	HOUSTON CENTER 132.8 343.7	CTAF 122.9
---------------------	-------------------------------	---------------



1000	2000	FOSAL	COUR	COGAL	Procedure Turn NA
↑	↗	✧	✧	✧	
RW31	308°	2000	308°	2000	
↖	↗	↗	↗	↗	
5 NM	6 NM				
CATEGORY	A	B	C	D	
LNAB MDA	840-1	477 (500-1)	840-1¼ 477 (500-1¼)	NA	
CIRCLING	920-1	555 (600-1)	1200-2½ 835 (900-2½)	NA	



SC-3, 10 JUL 2025 to 07 AUG 2025

SC-3, 10 JUL 2025 to 07 AUG 2025