

WAAS CH 93920 W31A	APP CRS 308°	Rwy Idg TDZE 1123 Apt Elev 1123	4010
--	------------------------	---	-------------

RNAV (GPS) RWY 31

LITTLE FALLS/MORRISON COUNTY-LINDBERGH FLD (LXL)

RNP APCH.

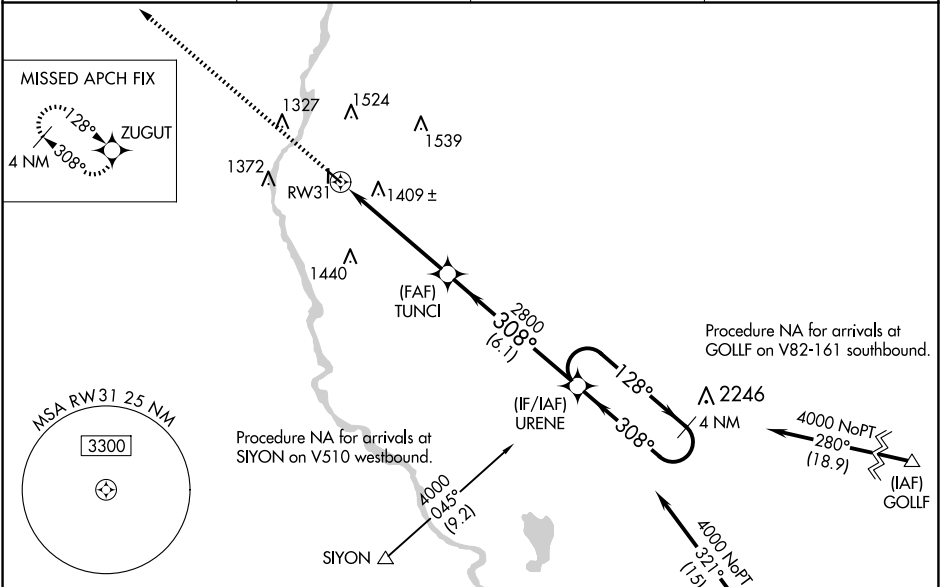
▼

▲

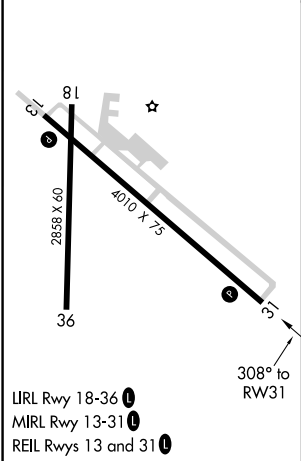
Baro-VNAV NA when using St Cloud altimeter setting. For uncompensated Baro-VNAV systems, LNAV/VNAV NA below -17°C or above 32°C. Rwy 31 visibility reduction below ¾ SM by helicopters NA. When local altimeter setting not received, use St. Cloud altimeter setting and increase all DAs 76 feet and all MDAs 80 feet; increase LPV all Cats visibility ½ SM and LNAV/VNAV all Cats, LNAV Cat C/D and Circling Cat C/D visibility ¼ SM. Circling Rwy 18, 36 NA.

MISSED APPROACH:
Climb to 3000 direct ZUGUT and hold.

AWOS-3 119.45	MINNEAPOLIS CENTER 118.05 239.0	GCO 121.725	UNICOM 122.8 (CTAF) 0
-------------------------	---	-----------------------	---------------------------------



ELEV 1123	D	TDZE 1123
-----------	----------	-----------



3000	ZUGUT	VGSI and RNAV glidepath not coincident (VGSI Angle 3.00°/TCH 25).	4 NM	Holding Pattern
TUNCI	2800	URENE	128°	4000
RW31	2800	308°	308°	GP 3.00°
5.1 NM	6.1 NM			TCH 45
CATEGORY	A	B	C	D
LPV DA	1517-1⅓ 394 (400-1⅓)			
LNAV/VNAV DA	1749-2¼ 626 (700-2¼)			
LNAV MDA	1660-1	537 (600-1)	1660-1½	537 (600-1½)
CIRCLING	1700-1	1800-1	1840-2	2000-2¾
	577 (600-1)	677 (700-1)	717 (800-2)	877 (900-2¾)

NC-1, 10 JUL 2025 to 07 AUG 2025

NC-1, 10 JUL 2025 to 07 AUG 2025