

APP CRS
226°

Rwy Idg
TDZE
Apt Elev

2965
1032
1032

RNAV (GPS) RWY 23

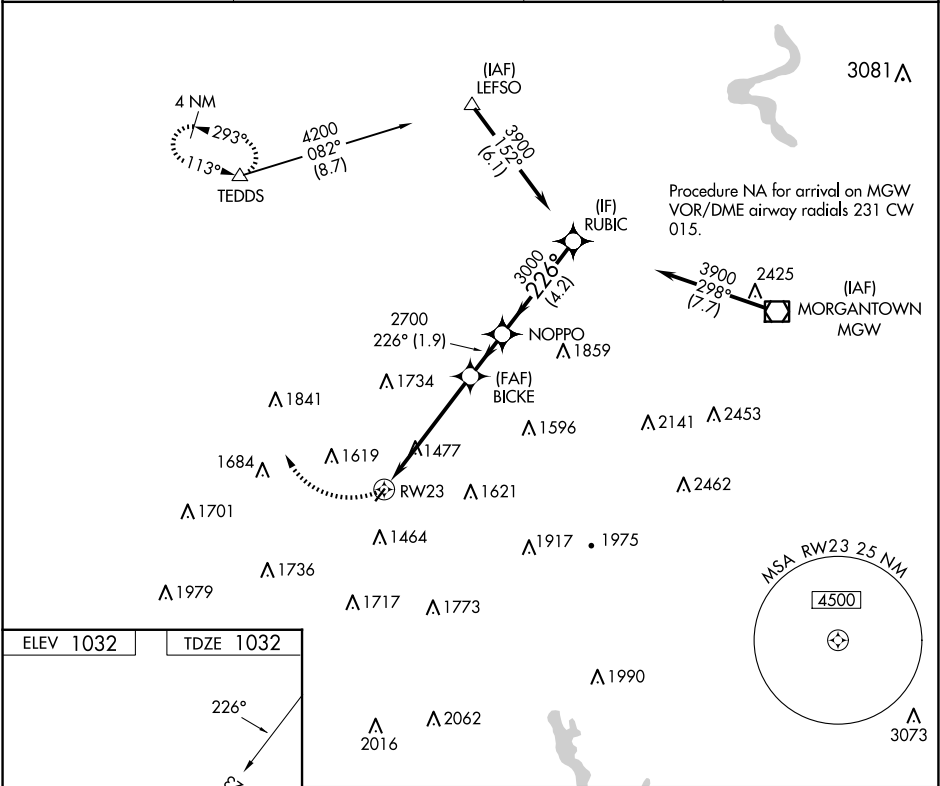
FAIRMONT MUNI-FRANKMAN FLD (4G7)

RNP APCH.

Procedure NA at night.
Rwy 23 helicopter visibility reduction below 1 SM NA.

MISSED APPROACH: Climbing right turn to 4000 direct TEDDS and hold.

CKB ASOS-3 127.825	CLARKSBURG APP CON★ 121.15 284.65	CLNC DEL 118.35	UNICOM 122.8 (CTAF) 0
-----------------------	--------------------------------------	--------------------	--------------------------



ELEV 1032

TDZE 1032

Visual Segment - Obstacles.

4000 TEDDS

RUBIC

NOPPO

BICKE

RW23

5.1 NM

1.9 NM

4.2 NM

CATEGORY	A	B	C	D
LNAV MDA	1840-1 808 (900-1)	1840-1¼ 808 (900-1¼)	1840-2½ 808 (900-2½)	NA
CIRCLING	1840-1 808 (900-1)	1840-1¼ 808 (900-1¼)	2020-3 988 (1000-3)	NA