

WAAS CH 70407 W29A	APP CRS 291°	Rwy Ldg TDZE 127 Apt Elev 145	5480
--	------------------------	---	-------------

RNAV (GPS) RWY 29

SKAGIT RGNL (BVS)

RNP APCH.

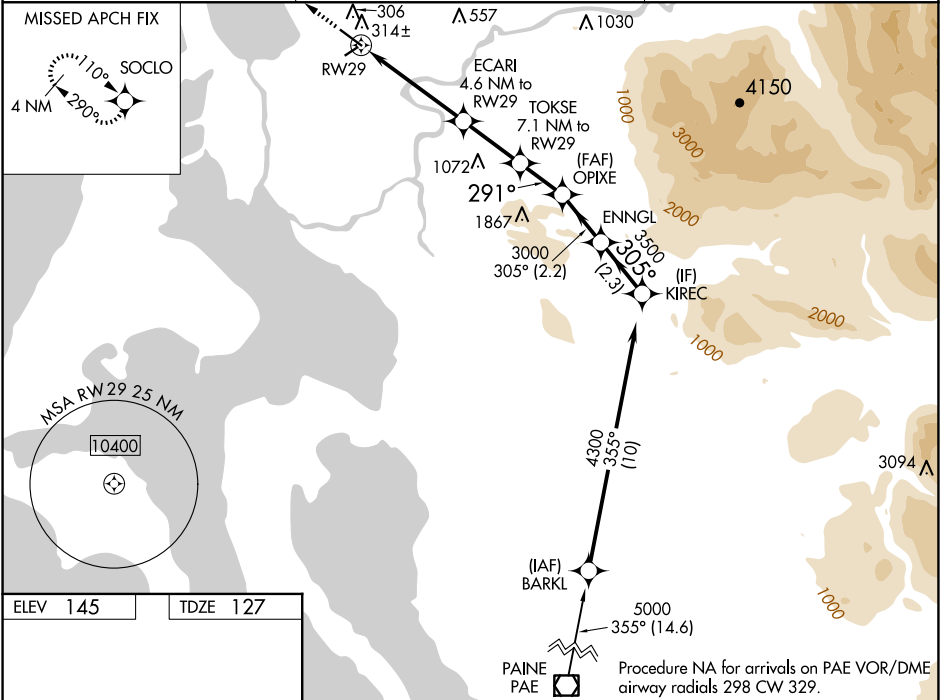
▼


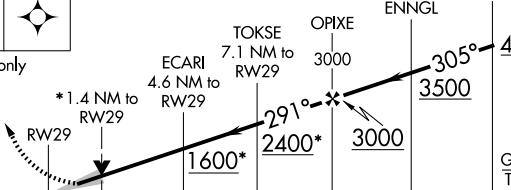
⚠

For uncompensated Baro-VNAV systems, LNAV/VNAV NA below -15°C or above 54°C.
Baro-VNAV and VDP NA when using Friday Harbor altimeter setting. When local altimeter setting not received use Friday Harbor altimeter setting; increase LPV DA to 438 feet, LNAV/VNAV DA to 536 feet and all Cats visibility ¼ SM; increase all MDA 60 feet.

MISSED APPROACH: Climb to 4000 direct SOCLO and hold, continue climb-in-hold to 4000.

AWOS-3 121.125	WHIDBEY APP CON 120.7 270.8	UNICOM 123.075 (CTAF) ①
--------------------------	---------------------------------------	-----------------------------------



4000 ↑	SOCLO 	 <p>*LNAV only</p> <p>RW29</p> <p>*1.4 NM to RW29</p> <p>ECARI 4.6 NM to RW29</p> <p>TOKSE 7.1 NM to RW29</p> <p>OPIXE 3000</p> <p>ENNGL</p> <p>KIREC</p> <p>305°</p> <p>4300</p> <p>3500</p> <p>3000</p> <p>291°</p> <p>2400*</p> <p>1600*</p> <p>GP 3.00° TCH 42</p> <p>1.4 NM</p> <p>3.2 NM</p> <p>2.5 NM</p> <p>1.9 NM</p> <p>2.2 NM</p> <p>2.3 NM</p>						
CATEGORY	A					B	C	D
LPV DA	377- $\frac{7}{8}$					250 (300- $\frac{7}{8}$)		
LNAV/VNAV DA	475-1 $\frac{1}{4}$		348 (400-1 $\frac{1}{4}$)					
LNAV MDA	580-1	453 (500-1)	580-1 $\frac{3}{8}$	453 (500-1 $\frac{3}{8}$)				