

WAAS CH 87032 W04A	APP CRS 044°	Rwy Ldg TDZE Apt Elev 823
--	------------------------	--

RNAV (GPS) RWY 4

CLINTON RGNL (GLY)

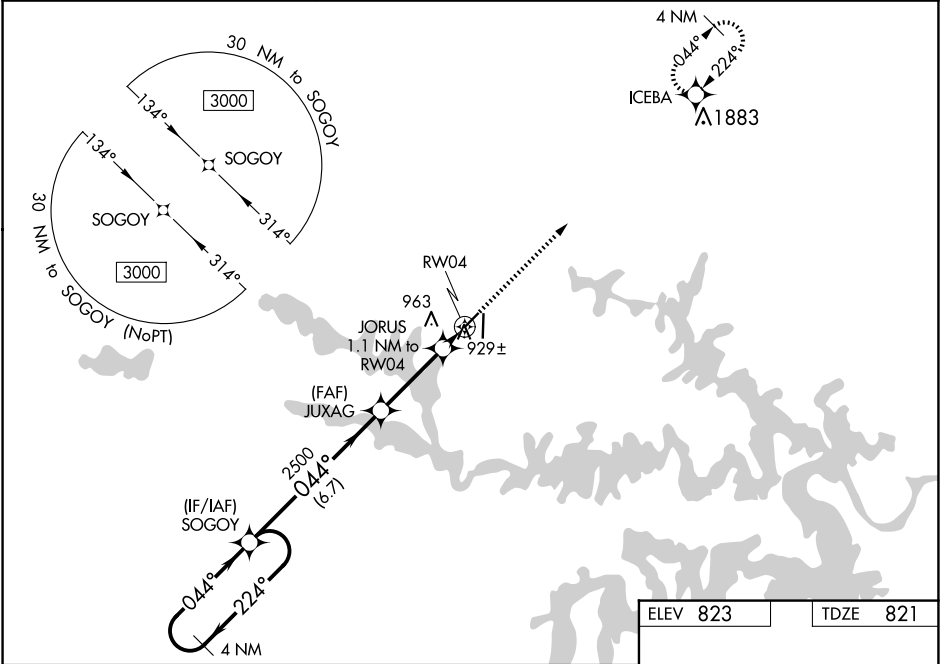
RNP APCH.

⚠

For uncompensated Baro-VNAV systems, LNAV/VNAV NA below -16°C or above 54°C. When local altimeter setting not received, use Whiteman AFB altimeter setting and increase all DA 61 feet and all MDA 80 feet; increase LNAV-VNAV all Cats and LNAV Cat C visibility ¼ mile. Baro-VNAV NA when using Whiteman AFB altimeter setting. Straight-in Rwy 4 NA at night, Circling Rwy 4 NA at night. Rwy 4 helicopter visibility reduction below 1 SM NA.

MISSED APPROACH:
Climb to 3000 direct ICEBA and hold.

AWOS-3PT 120.475	WHITEMAN APP CON ★ 127.45	UNICOM 122.8 (CTAF) 0
----------------------------	-------------------------------------	---------------------------------



VGSI and RNAV glidepath not coincident (VGSI Angle 3.50/TCH 39).		3000	ICEBA
4 NM Holding Pattern		SOGOY	
3000 ← 224° 044° →		JUXAG	
GP 3.60° TCH 58		JORUS	
		RW04	
		*1280	
		6.7 NM	3.1 NM
		1.1 NM	
CATEGORY	A	B	C
LPV DA	1121-1	300 (300-1)	NA
LNAV/VNAV DA	1206-1½	385 (400-1½)	NA
LNAV MDA	1180-1	359 (400-1)	NA
CIRCLING	1280-1 457 (500-1)	1300-1 477 (500-1)	1340-1½ 517 (600-1½)

