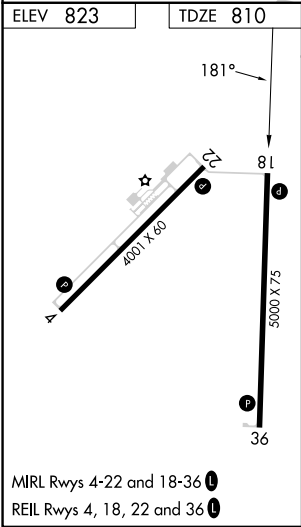
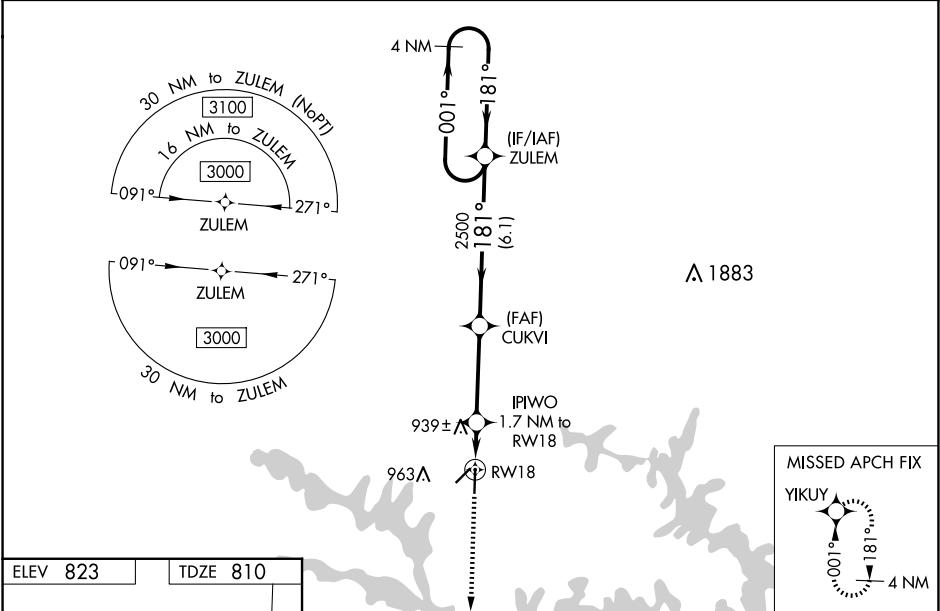


WAAS CH 65637 W18A	APP CRS 181°	Rwy Ldg TDZE Apt Elev	5000 810 823
--	------------------------	-----------------------------	---

RNAV (GPS) RWY 18

CLINTON RGNL (GLY)

RNP APCH. <div><div>▼</div><div>▲</div></div> Baro-VNAV NA when using Whiteman AFB altimeter setting. For uncompensated Baro-VNAV systems, LNAV/VNAV NA below -16°C or above 54°C. Circling Rwy 4 NA at night. When local altimeter setting not received, use Whiteman AFB altimeter setting and increase all DA 61 feet and all MDA 80 feet, visibility LNAV Cat C/D ¾ mile, Circling Cat D ¼ mile. Rwy 18 helicopter visibility reduction below ¾ SM NA. VDP NA when using Whiteman AFB altimeter setting.		MISSED APPROACH: Climb to 3000 direct YIKUY and hold.
AWOS-3PT 120.475	WHITEMAN APP CON ★ 127.45	UNICOM 122.8 (CTAF) 0



3000 YIKUY		VGSI and RNAV glidepath not coincident (VGSI Angle 3.00/TCH 39).			
*LNAV only.		IPIWO 1.7 NM to RW18	CUKVI 2500	ZULEM 4 NM Holding Pattern	
RW18 1.1 NM to RW18		1380*	2500	001° → 3000	GP 3.00° TCH 45
1.1 NM 0.6 3.5 NM 6.1 NM					
CATEGORY	A	B	C	D	
LPV DA	1060-1 250 (300-1)				
LNAV/VNAV DA	1060-1 250 (300-1)				
LNAV MDA	1200-1 390 (400-1)				
C CIRCLING	1280-1 457 (500-1)	1300-1 477 (500-1)	1340-1½ 517 (600-1½)	1480-2 657 (700-2)	