

APP CRS  
129°

Rwy Idg  
TDZE  
Apt Elev

3960  
1215  
1216

RNAV (GPS) RWY 12

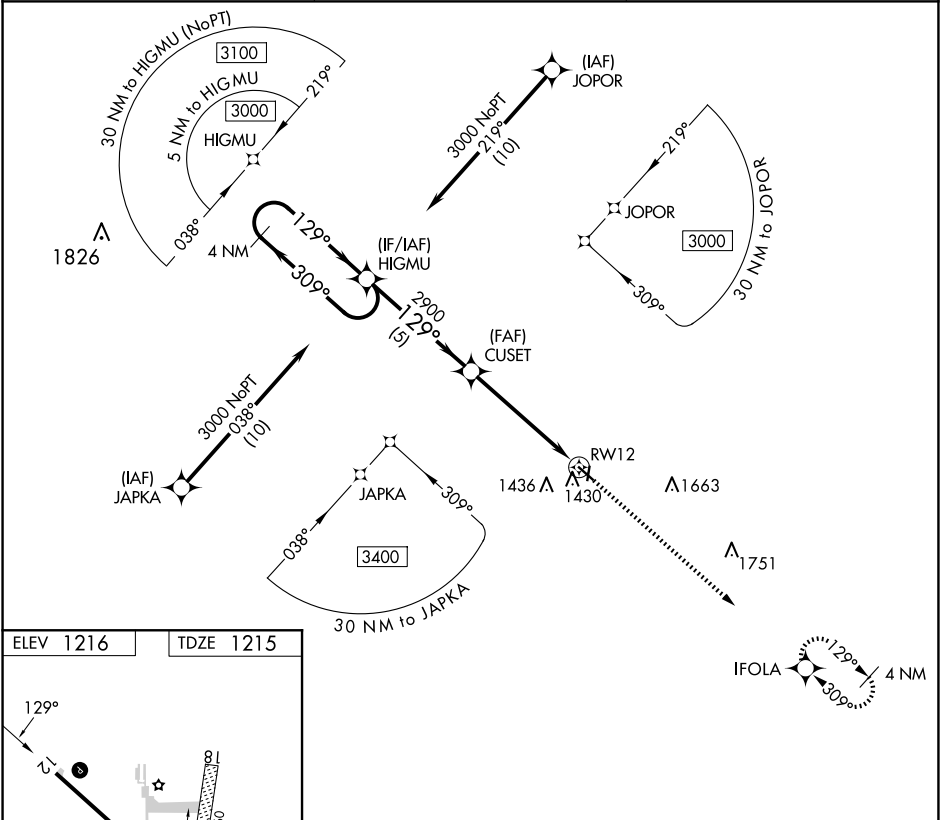
ALGONA MUNI (AXA)

RNP APCH.

When local altimeter setting not received, use Forest City altimeter setting and increase all MDA 80 feet. Procedure NA at night. Rwy 12 helicopter visibility reduction below 1 SM NA.

MISSED APPROACH: Climb to 3000 direct IFOLA and hold.

AWOS-3 118.475	MINNEAPOLIS CENTER 134.0 288.3	UNICOM 122.8 (CTAF) 0
-------------------	-----------------------------------	--------------------------



ELEV 1216

TDZE 1215

129°

36

81

0.4% UP

2893 X 160

0.3% UP

30

3900 X 75

4 NM Holding Pattern

HIGMU

3000

309°

129°

CUSET

2900

3.00°

TCH 40

RWY 12

5 NM

5.2 NM

3000

IFOLA

MIRL Rwy 12-30 0

REIL Rwy 12 and 30 0

CATEGORY	A	B	C	D
LNAV MDA	1680-1	465 (500-1)	NA	NA