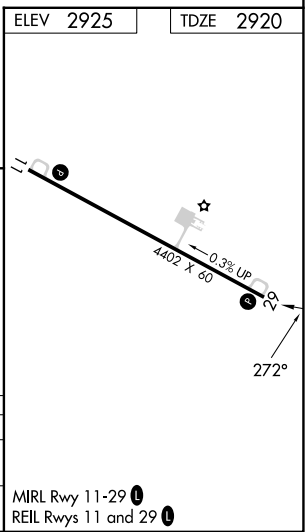
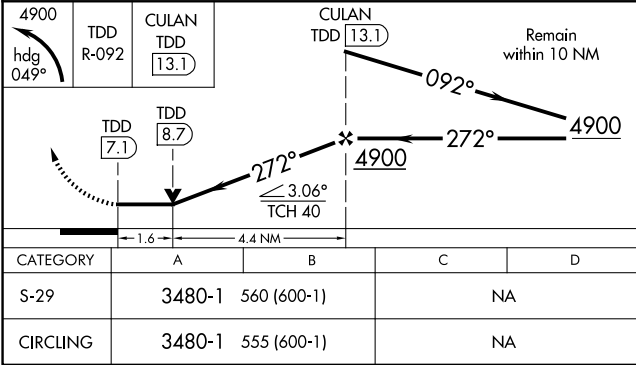
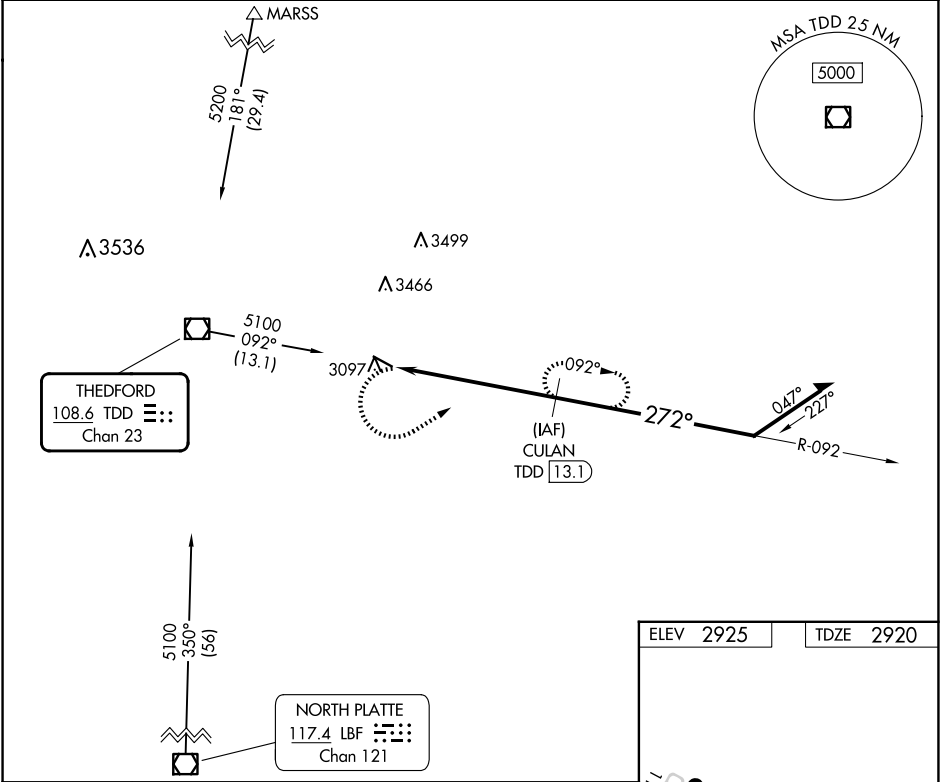


VOR/DME TDD	APP CRS	Rwy Idg	4402
108.6	272°	TDZE	2920
Chan 23		Apt Elev	2925

VOR RWY 29
THOMAS COUNTY (TIF')

DME required.	MISSED APPROACH: Climbing left turn to 4900 on heading 049° and TDD R-092 to CULAN/TDD 13.1 DME and hold.
<p>▼ Rwy 29 helicopter visibility reduction below ¾ SM NA. When local altimeter setting not received, use North Platte altimeter setting and increase all MDA 140 feet. VDP NA when using North Platte altimeter setting.</p>	

AWOS-3 120.825	DENVER CENTER 127.95 338.2	CTAF 122.9
-------------------	-------------------------------	---------------



NC-2, 10 JUL 2025 to 07 AUG 2025

NC-2, 10 JUL 2025 to 07 AUG 2025