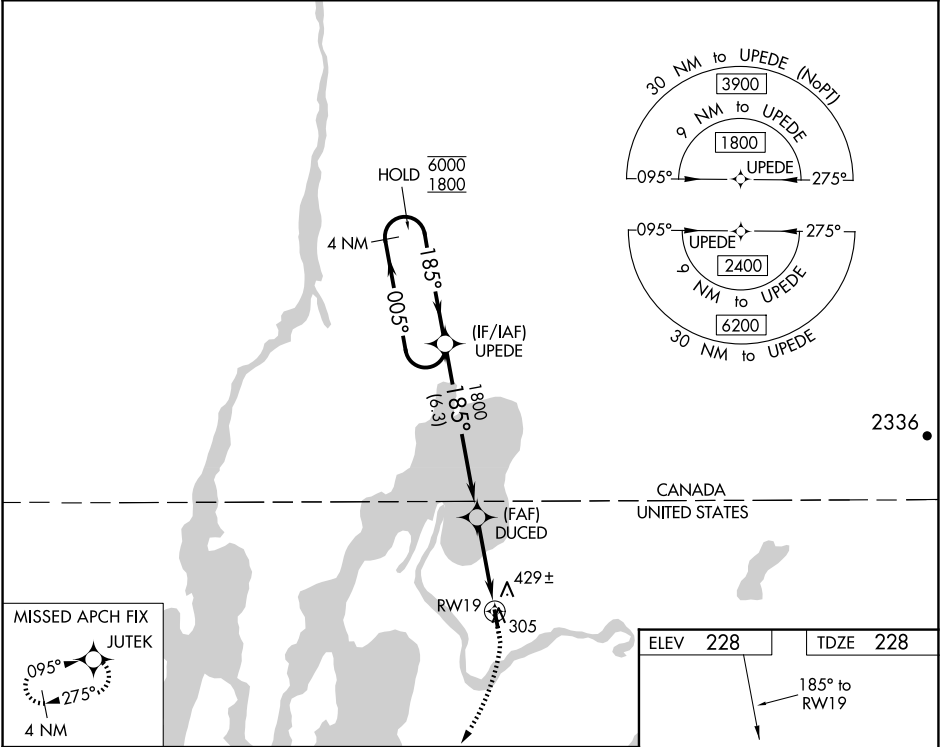


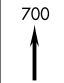
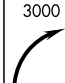

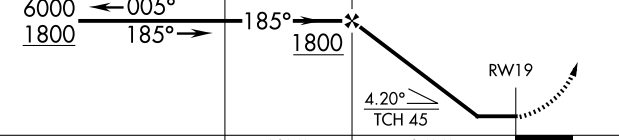

WAAS CH 78122 W19A	APP CRS 185°	Rwy Idg 3001 TDZE 228 Apt Elev 228
--	------------------------	---

RNAV (GPS) RWY 19

FRANKLIN COUNTY STATE (F'SO)

RNP APCH - GPS.		MISSED APPROACH: Climb to 700 then climbing right turn to 3000 direct JUTEK and hold.
▼ ▲ Procedure NA at night. Rwy 19 helicopter visibility reduction below 1 SM NA.		
AWOS-3 119.025	BURLINGTON APP CON★ 121.1 (EAST) 278.8 (WEST) 360.8	UNICOM 122.8 (CTAF) 0



4 NM Holding Pattern						
						
CATEGORY	A	B	C	D		
LP MDA	640-1	412 (500-1)	NA			
LNAV MDA	680-1	452 (500-1)	NA			
 CIRCLING	760-1 532 (600-1)	960-1 732 (800-1)	NA			

