

WAAS CH 48900 W01A	APP CRS 005°	Rwy Idg 3001 TDZE 228 Apt Elev 228
--	------------------------	---

RNAV (GPS) RWY 1

FRANKLIN COUNTY STATE (FSO)

RNP APCH-GPS.

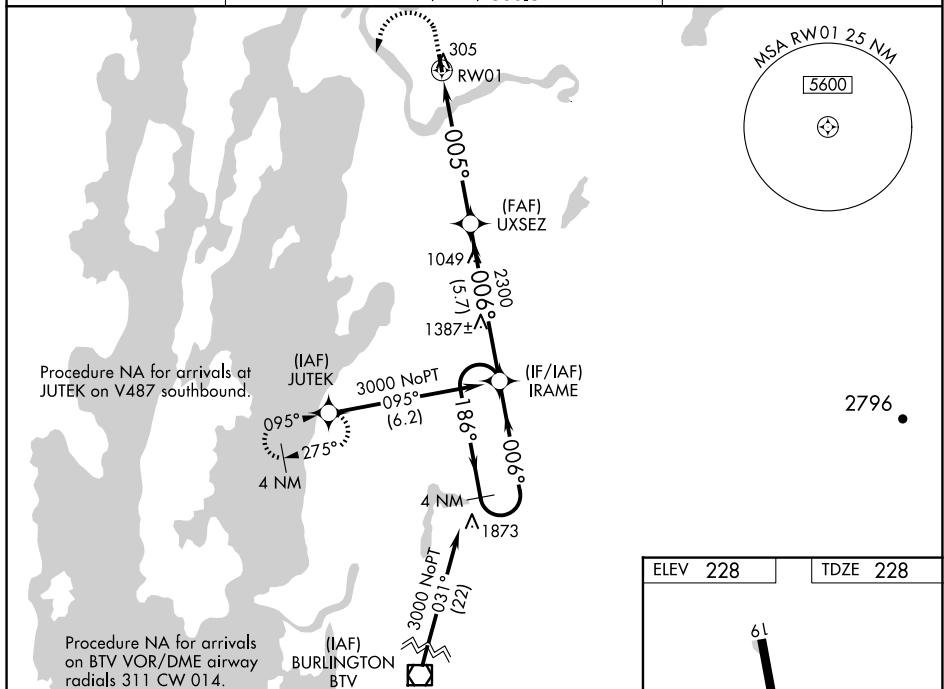


For uncompensated Baro-VNAV systems, LNAV/VNAV NA below -15°C or above 54°C.
Rwy 1 helicopter visibility reduction below 1 SM NA.
Procedure NA at night.

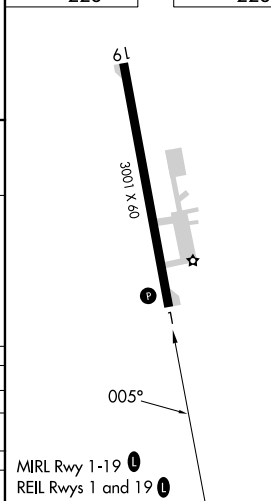
MISSED APPROACH: Climb to 1100 then climbing left turn to 3000 direct JUTEK and hold.

AWOS-3
119.025

BURLINGTON APP CON ★
121.1 (EAST) 278.8
(WEST) 360.8

UNICOM
122.8 (CTAF) **L**

ELEV 228		TDZE 228
----------	--	----------



The diagram illustrates the JUTEK holding pattern, which is a 4 NM Holding Pattern. Key features include:

- GP 3.40° TCH 59**: Ground Proximity altitude and Tower Clearance Height.
- IRAME**: Initial Reference Altitude Minimum Enroute.
- UXSEZ**: Upper Limit of the Holding Pattern.
- RW01**: Runway 01.
- VGSI and RNAV glidepath angle not coincident (VGSI Angle 4.00/TCH 40)**: Note indicating that the VGSI and RNAV glidepath angles are not coincident.
- Angles**: The diagram shows several angles: 186°, 006°, 005°, and 1100°.
- Distances**: The distance from IRAME to UXSEZ is 5.7 NM, and the distance from UXSEZ to RW01 is 5.6 NM.