

VOR XUB  
112.5

APP CRS  
204°

Rwy Idg  
5405  
TDZE  
716  
Apt Elev  
725

VOR RWY 23  
ROSS COUNTY (R/ZT)

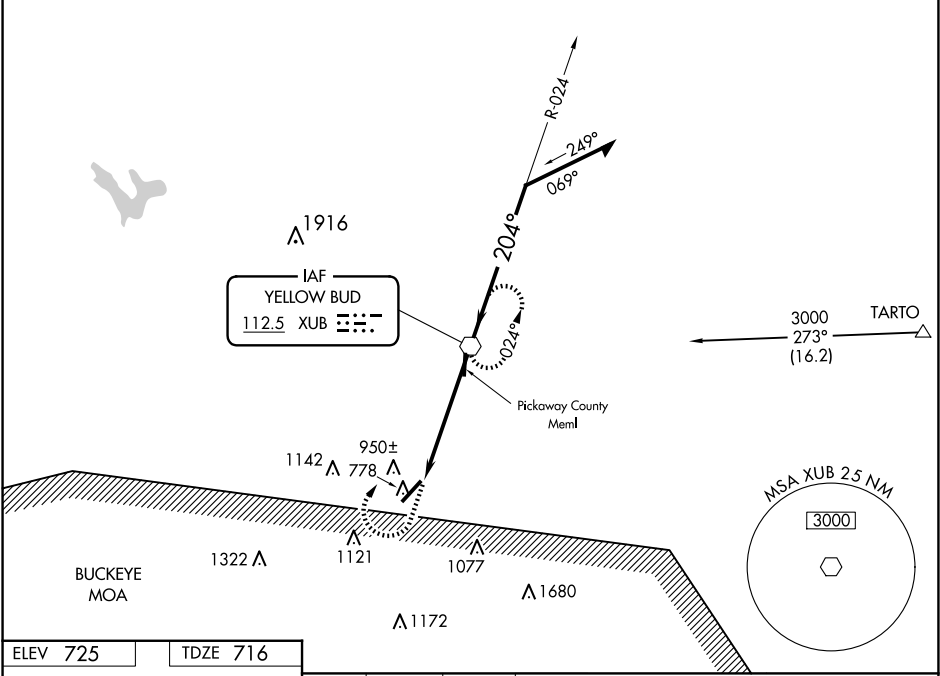
▼

NA

When local altimeter setting not received, use Rickenbacker Intl altimeter setting. When VGSI is inop, Straight-in and Circling Rwy 23 procedures NA at night.

MISSED APPROACH: Climb to 3000 then right turn direct XUB VOR and hold.

AWOS-3 119.225	COLUMBUS APP CON 134.0 279.6	UNICOM 122.8 (CTAF)	123.0
-------------------	---------------------------------	------------------------	-------



ELEV 725 TDZE 716

204°

5405 x 100

0.4% UP

REIL Rwy 5 and 23  
MIRL Rwy 5-23

FAF to MAP 5.2 NM

Knots	60	90	120	150	180
Min:Sec	5:12	3:28	2:36	2:05	1:44

3000

XUB

XUB VOR

Remain within 10 NM

2300

5.2 NM

2.82° TCH 45

CATEGORY	A	B	C	D
S-23	1220-1	504 (500-1)	1220-1½	504 (500-1½)
CIRCLING	1340-1 615 (700-1)	1360-1 635 (700-1)	1500-2¼ 775 (800-2¼)	1540-2¾ 815 (900-2¾)
RICKENBACKER INTL ALTIMETER SETTING MINIMUMS				
S-23	1280-1	564 (600-1)	1280-1⅝	564 (600-1⅝)
CIRCLING	1400-1 675 (700-1)	1420-1 695 (700-1)	1560-2½ 835 (900-2½)	1600-2¾ 875 (900-2¾)