

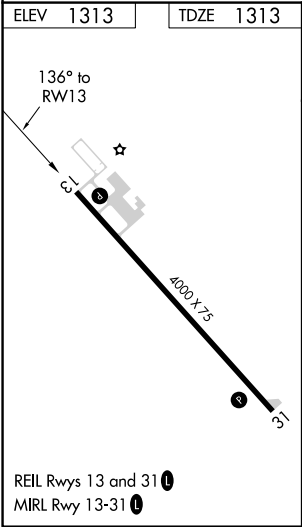
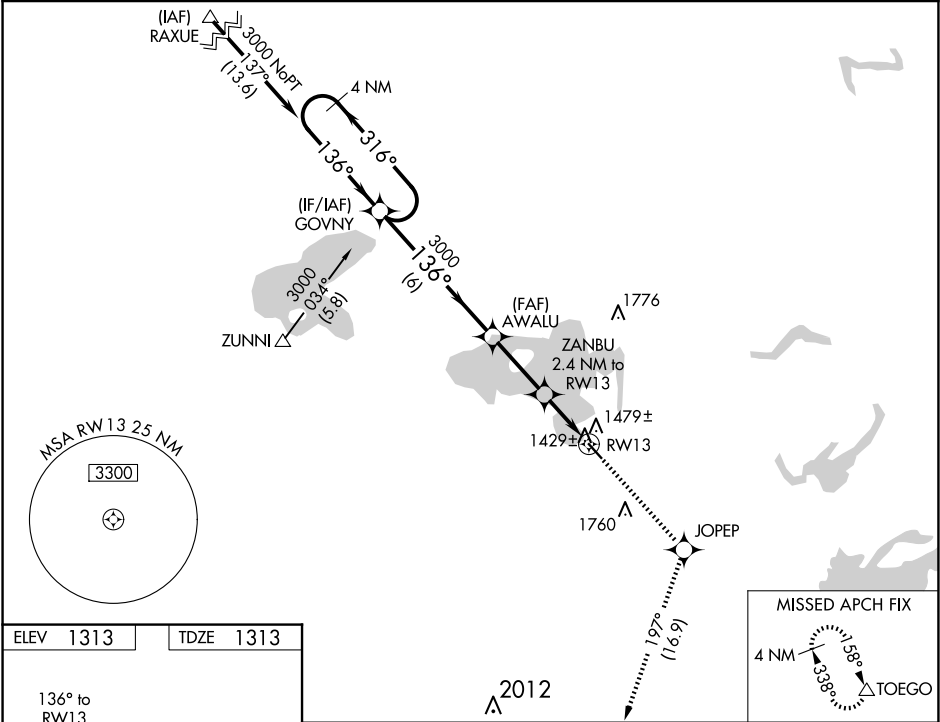
WAAS CH 69224 W13A	APP CRS 136°	Rwy Idg TDZE Apt Elev	4000 1313 1313
--	------------------------	-----------------------------	---

RNAV (GPS) RWY 13

ORR RGNL(ORB)

RNP APCH. ▼ Rwy 13 helicopter visibility reduction below ¾ SM NA. When local altimeter setting not received, use Cook altimeter setting; increase all MDA 40 feet and increase Circling visibility Cat C ¼ SM. VDP NA when using Cook altimeter setting. ⚠	MISSED APPROACH: Climb to 3600 direct JOPEP and on track 197° to TOEGO and hold.
--	--

AWOS-3 118.325	MINNEAPOLIS CENTER 120.9 377.1	GCO 121.725	UNICOM 122.8 (CTAF) 0
--------------------------	--	-----------------------	---------------------------------



VGSI and descent angles not coincident (VGSI Angle 3.00/TCH 20).				3600	JOPEP	TOEGO
4 NM Holding Pattern				↑	✦	tr 197°
3000 ← 316° → 136° → 3000				ZANBU 3.00° TCH 40 2.4 NM to RW13		
6 NM				2100 1.2 NM to RW13		
2.8 NM				1.2		
CATEGORY	A	B	C	D		
LP MDA	1720-1	407 (500-1)	1720-1½ 407 (500-1½)	NA		
LNAV MDA	1760-1	447 (500-1)	1760-1¾ 447 (500-1¾)	NA		
CIRCLING	1920-1	607 (700-1)	2120-2¼ 807 (900-2¼)	NA		

NC-1, 10 JUL 2025 to 07 AUG 2025

NC-1, 10 JUL 2025 to 07 AUG 2025