

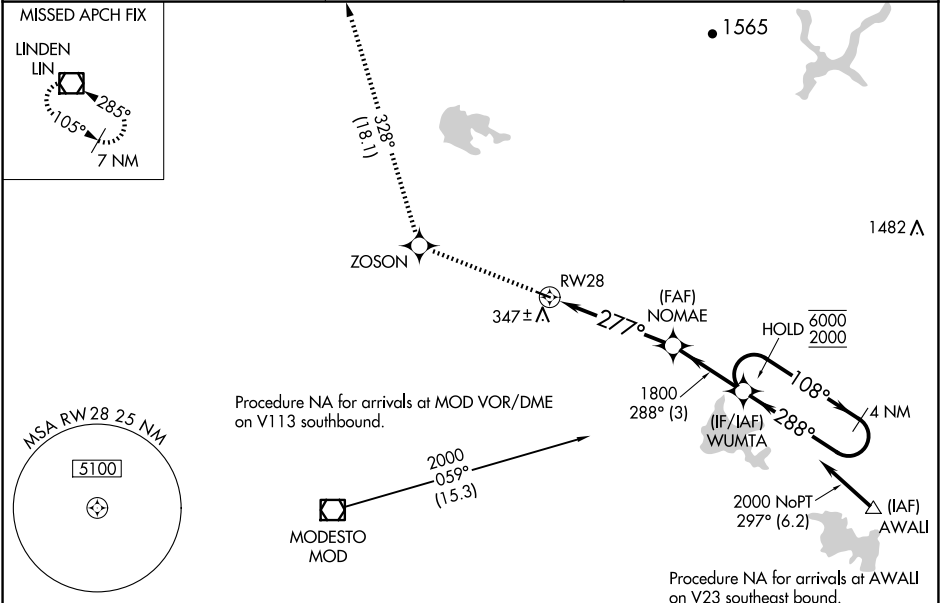
WAAS CH <b>70523</b> <b>W28A</b>	APP CRS <b>277°</b>	Rwy Idg <b>3013</b> TDZE <b>237</b> Apt Elev <b>237</b>
--	------------------------	---

RNAV (GPS) RWY 28

OAKDALE (O27)

RNP APCH-GPS.	MISSED APPROACH: Climb to 7000 direct ZOSON and on track 328° to LIN VOR/DME and hold, continue climb-in-hold to 7000.
▼ Rwy 28 helicopter visibility reduction below ¾ SM NA. Baro-VNAV NA. ▲ NA Use Modesto altimeter setting; when not received, use Stockton altimeter setting: increase LPV DA to 581 feet and all visibilities ⅛ SM; increase LNAV/VNAV DA to 728 feet; increase all MDAs 40 feet.	

MOD ASOS <b>127.7</b>	NORCAL APP CON <b>125.1 363.2</b>	UNICOM <b>122.8 (CTAF) 0</b>
--------------------------	--------------------------------------	---------------------------------



ELEV <b>237</b>	TDZE <b>237</b>
-----------------	-----------------

7000	ZOSON	tr 328°	LIN	VGSI and RNAV glidepath not coincident (VGSI Angle 3.00/TCH 25).	4 NM Holding Pattern
			NOMAE		
			1800		108° → 6000 ← 288° 2000
			277°		GP 3.00° TCH 53
			4.7 NM	3 NM	
CATEGORY	A	B	C	D	
LPV DA	547-7⅞	310 (400-7⅞)		NA	
LNAV/VNAV DA	694-1⅓	457 (500-1⅓)		NA	
LNAV MDA	820-1	583 (600-1)	820-1⅓ 583 (600-1⅓)	NA	
CIRCLING	820-1	583 (600-1)	920-2 683 (700-2)	NA	

REIL Rwy 10 and 28  
MIRL Rwy 10-28 0

SW-2, 10 JUL 2025 to 07 AUG 2025

SW-2, 10 JUL 2025 to 07 AUG 2025