

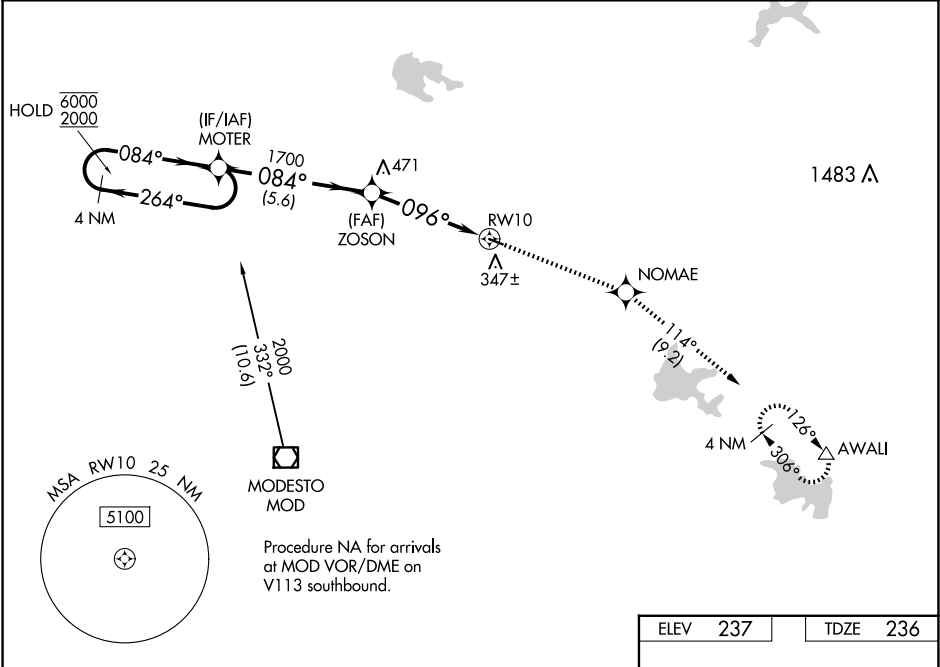
WAAS CH 42524 W10A	APP CRS 096°	Rwy Idg TDZE Apt Elev	3013 236 237
--	------------------------	-----------------------------	---

RNAV (GPS) RWY 10

OAKDALE (O27)

RNP APCH-GPS.		MISSED APPROACH: Climb to 4000 direct NOMAE and on track 114° to AWALI and hold, continue climb-in-hold to 4000.
NA	Baro-VNAV NA. Use Modesto altimeter setting; when not received, use Stockton Metro altimeter setting: increase LPV DA to 627 feet and all visibilities ½ SM; increase LNAV/VNAV DA to 588 feet and all visibilities ½ SM; increase all MDAs 40 feet and LNAV Cat C visibility ½ SM.	

MOD ASOS 127.7	NORCAL APP CON 125.1 363.2	UNICOM 122.8 (CTAF)
--------------------------	--------------------------------------	-------------------------------



VGSI and RNAV glidepath not coincident (VGSI Angle 2.50/TCH 26).				4000 ↑	NOMAE ✦	tr 114° ↻	AWALI △
4 NM Holding Pattern		MOTER		ZOSON			
6000 ← 264° 2000 → 084°		1700		1700		RW10	
GP 3.00° TCH 40		084°		096°			
		5.6 NM		4.5 NM			
CATEGORY	A	B	C	D			
LPV DA	593-1 357 (400-1)			NA			
LNAV/VNAV DA	554-7/8 318 (400-7/8)			NA			
LNAV MDA	760-1 524 (600-1)		760-1½ 524 (600-1½)		NA		
CIRCLING	760-1 523 (600-1)	820-1 583 (600-1)	920-2 683 (700-2)		NA		

