

WAAS CH 49201 W18A	APP CRS 181°	Rwy Idg 6503 TDZE 298 Apt Elev 298
--	------------------------	---

RNAV (GPS) RWY 18

HATTIESBURG/LAUREL RGNL (PIB)

RNP APCH-GPS.



For uncompensated Baro-VNAV systems, LNAV/VNAV NA below -15°C or above 54°C.

MALSR



MISSED APPROACH:
Climb to 2000 direct
REWYO and hold.

AWOS-3PT	HOUSTON CENTER	UNICOM
128.325	126.8 327.8	123.0 (CTAF) 0

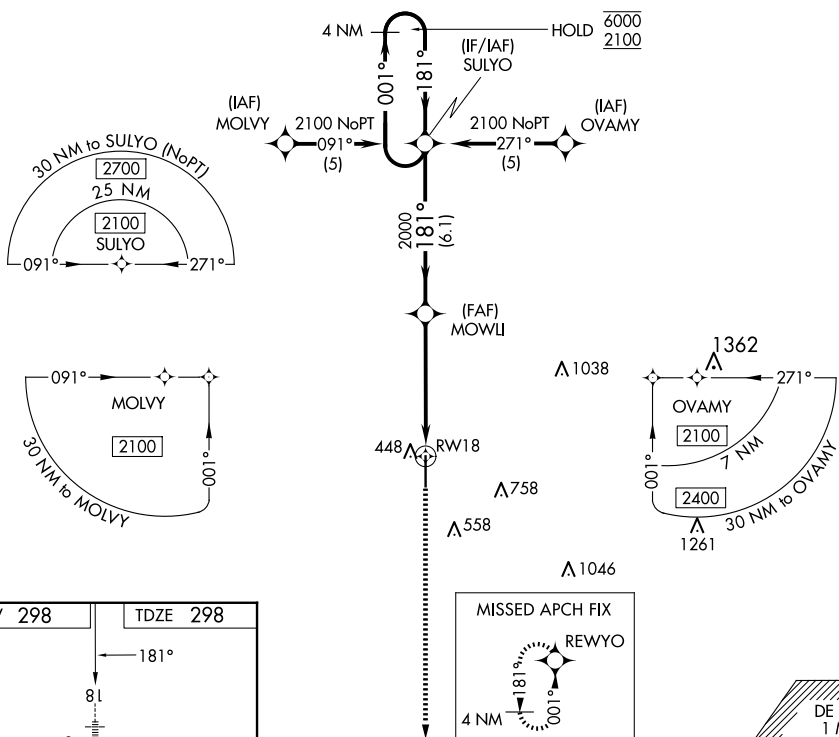


Diagram illustrating the HIRL Rwy 18-36 and REIL Rwy 18 and 36. The diagram shows a vertical runway with a width of 6503 X 150. The runway is labeled "HIRL Rwy 18-36" and "REIL Rwy 18 and 36". The runway is marked with "A5" at the top, "P" at the bottom, and "36" at the bottom. A star symbol is labeled "352". A compass rose indicates a heading of 181°. The diagram is labeled "ELEV 298" and "TDZE 298".